



KALAMAZOO INSTITUTE OF ARTS  
ANNUAL REPORT 2017-18

## A year of history, culture, and the arts

---

This year, as always, we worked to create meaningful experiences for our community through an array of exhibitions and programs designed to present unique viewpoints.

Five shows illuminated and featured works from our treasured collection: *Round and Round: The Circle at Center Stage*; *Rhythmic Vitality: Six Principles of Chinese Painting*; *Passion on Paper: Masterly Prints from the KIA Collection*; *The Way Forward: New Acquisitions at the KIA*; and *Dawoud Bey: Harlem, USA, and Harlem Redux*.

These shows powered energetic conversations about history, culture, and the arts, and demonstrated the efforts of our team to improve the breadth, depth, and quality of our collection. *The Way Forward*, in particular, spotlighted our commitment to the interpretation and display of diverse narratives about the art of the U.S. and Asia.

The Dawoud Bey exhibition created new possibilities to celebrate photography as an art form and to discuss the social, cultural, and political context of neighborhoods that shape the identities of their residents. Bey explored the changes of an American neighborhood by redefining our notions of place and community, and, at times, documenting feelings of powerlessness when the environment shifts in unexpected ways to accommodate change.

We love giving flight to the aspirations of burgeoning young artists in the *Young Artists of Kalamazoo County* show and the *High School Area Show*, and supporting the regional community of artists through the *West Michigan Area Show*. These important programs represent essential collaborations with area artists, schools, and partner organizations throughout the community.

*Circular Abstractions: Bull's Eye Quilts and Global Glass: A Survey of Form and Function* came about through collaborations with the Muskegon Museum of Art and the University of Michigan-Dearborn's Alfred Berkowitz Gallery, while *My Hero* offered reflection about the definition of "hero" and an opportunity to recognize our personal superpowers and the heroic accomplishments we achieve for one another every day.

In 2018, we celebrated acquiring an important American painting by Charles Russell, and a gift of \$1 million, through the generosity of visionary donor Martha Parfet. We remember Martha for her lifelong support, and for continuing a tradition of giving she inherited from her parents, Donald and Genevieve Upjohn Gilmore. In memory of Martha's pioneering spirit and dedication to promoting the advancement of women, we purchased a painting by Philemona Williamson.

These two paintings will allow a new generation of patrons to think about ways to unite past and present and bring art to life. Learn more about other exciting works added to our collection this year in the following pages.

An collaboration with Kalamazoo College resulted in a new shared position: a Post-Doctoral Curatorial Fellow, which is facilitating greater access to and scholarship with our collection. This position lays the foundation of our commitment to the next generation by inviting college students to engage deeply with our collection.

Our stellar Kirk Newman Art School, with an expanding range of classes, reached record registration and tuition for a fourth consecutive year. All of this is possible because of you, our generous patrons, who give time, funding, and insight to your KIA.

Thank you. We are grateful for your support in helping us achieve our goals this year, plan for the future, and embrace new ideas for greater engagement across cultures and with our many communities. Each day, our staff and volunteers work tirelessly to create a warm and enthusiastic welcome for you.

With great anticipation for the future,

**Belinda Tate**  
Executive Director

**Ron Kitchens**  
Board Chair



*My Hero: Contemporary Art and Superhero Action*



*2018 West Michigan Area Show*



*Vibrant Bounty: Chinese Folk Art from the Shaanxi Region*



*Circular Abstractions: Bull's Eye Quilts*

## Exhibitions

This year's exhibitions reflected a renewed commitment to the display and interpretation of our collection. Visitors enjoyed a mix of traditional and contemporary art representing diverse voices and aesthetic styles. Most were group exhibitions, with one notable exception.

We were thrilled to secure – before his MacArthur Fellowship award – renowned photographer Dawoud Bey for an exhibition. Two series of photographs – from the present time and from the beginning of his career – filled two main floor galleries. Bey visited Kalamazoo to share his wisdom with patrons at the KIA and with college students at WMU, and also juried the West Michigan Area Show.

Other exhibitions brought work to Kalamazoo from all over the nation and the world – while our annual community shows exhibited some of our favorite artists: area students just beginning to embrace their talents.

### Kirk Newman Faculty Review

**Circular Abstractions: Bull's Eye Quilts**

**Round and Round: The Circle at Center Stage**

**Rhythmic Vitality: Six Principles of Chinese Painting**

**Dawoud Bey: Harlem, USA, and Harlem Redux**

**Young Artists of Kalamazoo County**

**My Hero: Contemporary Art and Superhero Action**

**High School Area Show**

**Passion on Paper: Masterly Prints from the KIA Collection**

**Vibrant Bounty: Chinese Folk Art from the Shaanxi Region**

**West Michigan Area Show**

**Global Glass: A Survey of Form and Function**

**The Way Forward: New Acquisitions at the KIA**

## Acquisitions

Beyond exhibiting, we use our collection of more than 5,000 works to support learning and scholarship in our community of patrons, artists, educators, and students. This year, the collection grew by 74 works of art. Many were gifts from artists, friends, and members, with the balance purchased for the KIA collection, supported by funds designated for that purpose.

### GIFTS

#### GIFT OF MARY E. PETERSON

W. Howard Bond, *Upper Yosemite Falls*, February, 1995, gelatin silver print, 2017.22.1

W. Howard Bond, *Morning Clouds and Boulders, Grand Canyon*, 1997, gelatin silver print, 2017.22.2

W. Howard Bond, *Drying Dunes, Great Sand Dunes, Colorado*, 1992, gelatin silver print, 2017.22.3

W. Howard Bond, *Devil's Bathtub, Hocking Hills, Ohio*, 1997, gelatin silver print, 2017.22.4

W. Howard Bond, *Rain Forest Floor, New Zealand*, 1998, gelatin silver print, 2017.22.5

W. Howard Bond, *Rock and Fog, Bear Lake, California*, 1998, gelatin silver print, 2017.22.6

W. Howard Bond, *Tree on Cliff, Hocking Hills, Ohio*, 1996, gelatin silver print, 2017.22.7

W. Howard Bond, *Large and Small Dunes, Great Sand Dunes, Colorado*, 1998, gelatin silver print, 2017.22.8

W. Howard Bond, *Cottonwoods in Winter, Yosemite*, 1995, gelatin silver print, 2017.22.9

W. Howard Bond, *Zig Zag Stream, Hocking Hills, Ohio*, 1996, gelatin silver print, 2017.22.10

#### GIFT OF NINA MOLLHAGAN

Thomas Kendall, *Vase*, n.d., ceramic, 2017.25

#### GIFT OF PEGGY MICHAEL

Audrey Niffenegger, *The Adventuress*, 1985, handmade paper/color lithographs bound in a book, 2017.26

#### ANONYMOUS GIFT

Marc Hansen, *Vase*, ca. 1975, ceramic, 2017.27

#### GIFT OF ERIC JENSEN

Benjamin Miller, *Untitled*, 1927, woodcut, 2017.33

Benjamin Miller, *Untitled*, 1925, woodcut, 2017.34

Benjamin Miller, *Prodigal Son with Pigs*, 1925, woodcut, 2017.35

Benjamin Miller, *Sailor's Hangout*, 1920-29, woodcut, 2017.36

Benjamin Miller, *Untitled (Edgar Allen Poe)*, 1927, woodcut, 2017.37

#### GIFT OF JUDITH VAN SOLKEMA

Johann Eleazar Schenau, *Die beiden Mädchen mit Katze und Hund*, 1795, etching, 2017.44

Eugene Higgins, *Untitled (Boy pulling an infant in a cart)*, n.d., etching, 2017.45

#### GIFT OF DR. CAREY CHARLES

Pewabic Pottery, *Blue Vase*, ca. 1920, ceramic with iridescent glaze, 2017.46

#### GIFT OF THE ESTATE OF MARTHA PARFET

Charles Marion Russell, *Trail Boss*, ca. 1897, watercolor and graphite underdrawing on paper, 2017.47

Philemona Williamson, *Tender Breeze*, 2008, oil on linen, 2018.17

#### GIFT OF LINDA M. HAYES

Chul Hyun Ahn, *Infinite Yellow*, 2004, plywood, mirror, lights in white frame, 2018.2

#### GIFT OF ALICE MERRIMAN

Bolton Brown, *Woodland Brook*, n.d., lithograph, 2017.48

Bolton Brown, *Big Cedars*, n.d., lithograph, 2017.49

Bolton Brown, *Storm*, n.d., lithograph, 2018.4

#### GIFT OF PAUL G. SMITHSON

Félix Hilaire Buhot, *Les Grandes Chaumières*, 1881, etching, 2018.18

Camille Pissarro, *Faneuses*, 1890, etching, 2018.19

Erik Desmazières, *Bibliothèque Concentrique*, 1998, etching, 2018.20

Erik Desmazières, *Rembrandt's Kunst Caemer*, 2007, etching, 2018.21

#### GIFT OF TOM AND KAREN KENDALL

Thomas Kendall, *Platter*, 2014, porcelain and single fired glazes, 2018.24

Thomas Kendall, *Tripod Vase*, 1979, raku, 2018.25

#### GIFT OF KAREN GERNANT IN MEMORY OF LEONARD AND FRANCES GERNANT

Toko Shinoda, *After the Rain*, n.d., lithograph, 2018.27

Marc Chagall, *Job in Despair*, ca. 1960, color lithograph, 2018.28



Frank Bowling, *Man Overboard*, 2010, acrylic and acrylic gel on collaged and stitched cotton canvas. Collection of the Kalamazoo Institute of Arts. Elisabeth Claire Lahti Fund purchase

## BEQUESTS

### BEQUEST OF THE WILLIAM BURNS ESTATE

Karla Wyss-Tye, *Untitled (Bird Holding Bird)*, 1990, bronze, 2017.28

### BEQUEST OF THE DAVID AND MURIEL GREGG ESTATE

Olga Albizu, *Untitled*, ca. 1965, oil on canvas, 2018.23

Bernard Leach, *Jar with Lid*, 1957, ceramic, 2017.24

Denise Lisiecki, *Red Leather Chair*, 1982, serigraph, 2017.29

Kate Demke, *Spring Thaw*, 1984, etching, 2017.30

Martin Hubbard, *Grand Marais*, 1984, woodblock print, 2017.31

### BEQUEST OF J. MICHAEL KEENAN

Gertrud Natzler, *Bowl*, ca. 1960, earthenware, volcano-glazed, 2017.23

## PURCHASES

### ELISABETH CLAIRE LAHTI FUND

Vandorn Hinnant, *Gateway to Memory*, 1998, acrylic paint and Prismacolor on cotton rag paper, 2017.32

Marilyn Johnson, *Stuart Avenue*, 2002, oil on canvas, 2017.40

Marilyn Johnson, *Untitled (Houses and Tree)*, 2014, oil on canvas, 2017.41

Dulce Pinzón, *Catwoman: Minerva Valencia from Puebla, Mexico. She works as a nanny in New York and sends home 400 dollars a week*, 2005-2010, archival pigment print, 2018.1

Kay WalkingStick, *North Rim Clouds*, 2016, oil on wood panel, 2018.3.A-B

Merton D. Simpson, *Untitled*, 1963, oil on linen, 2018.11

Frank Bowling, *Man Overboard*, 2000, acrylic and acrylic gel on collaged and stitched cotton canvas, 2018.12

Eugene J. Martin, *Untitled*, 1988, pen, ink, and graphite on woven paper, 2018.13

Dawoud Bey, *Untitled #1 (Picket Fence and Farmhouse) from the series Night Coming Tenderly, Black*, 2018, gelatin silver print, 2018.22.1



Merton D. Simpson, *Untitled*, 1963, oil on linen canvas. Collection of the Kalamazoo Institute of Arts. Elisabeth Claire Lahti Fund purchase

Dawoud Bey, *Untitled #2 (Trees and Farmhouse) from the series Night Coming Tenderly, Black*, 2018, gelatin silver print, 2018.22.2

Dawoud Bey, *Untitled #8 (Leaves and House) from the series Night Coming Tenderly, Black*, 2018, gelatin silver print, 2018.22.3

Dawoud Bey, *Untitled #3 (Cozad-Bates House) from the series Night Coming Tenderly, Black*, 2018, gelatin silver print, 2018.22.4

Dawoud Bey, *Untitled #18 (Creek and Trees) from the series Night Coming Tenderly, Black*, 2018, gelatin silver print, 2018.22.5

Dawoud Bey, *Untitled #21 (Forest) from the series Night Coming Tenderly, Black*, 2018, gelatin silver print, 2018.22.6

Dawoud Bey, *Untitled #14 (Site of John Brown's Tannery) from the series Night Coming Tenderly, Black*, 2018, gelatin silver print, 2018.22.7

Dawoud Bey, *Untitled #4 (Leaves and Porch) from the series Night Coming Tenderly, Black*, 2018, gelatin silver print, 2018.22.8

Dawoud Bey, *Untitled #16 (At Lake Erie) from the series Night Coming Tenderly, Black*, 2018, gelatin silver print, 2018.22.9

Dawoud Bey, *Untitled #14 (Lake Erie and Sky) from the series Night Coming Tenderly, Black*, 2018, gelatin silver print, 2018.22.10

### JOY LIGHT EAST ASIAN ART ACQUISITION AND EXHIBITION FUND

Kaori Azuma, *Flower Vase (Kai)*, 2017, stoneware, 2018.7

Arnold Chang, *Landscape*, 2010, hanging scroll, ink on paper, 2017.21

Hung Liu, *Lady Lotus*, 2016, mixed media on panel, 2017.38

Hung Liu, *Village Portrait: Painting Landscape*, 2012, mixed media (duotone) on panel, 2017.39

Sayaka Shingu, *Gakuyo (vessel)*, n.d., stoneware, 2018.8

Qian Hui'an, *Bodhidharma*, n.d., ink and color on paper, 2018.9

Qian Hui'an, *Pavilion of Women*, n.d., ink and color on paper, 2018.10

Makiko Hattori, *Tsubomi: Bud*, 2015, porcelain stoneware, 2018.16

### HELEN SHERIDAN MEMORIAL FUND

Marilyn Johnson, *Crossing Livingston County Again*, 2014-2015, oil on canvas, 2017.42

Marilyn Johnson, *Portrait of Wendy*, 1974, oil on canvas, 2017.43

Xiaoling Li, *Copy of Ripe Fruits and Birds by Lin Chun, 1127-1179 CE*, 2013, ink and color on paper, 2018.6

Chad Bagge, *Halos*, 2017, white stoneware and high-fire reduction, 2018.26

### WARD H. AND CORA E. NAY DIRECTOR'S FUND 2018 WEST MICHIGAN AREA SHOW

BeiBei Chen and LeiLei Chen, *Gaia I*, 2018, hand screenprint, 2018.15

Nicholas Maury, *Failures of Communication: #1*, 2018, intaglio, 2018.14



## Museum Education

Guests of all ages don't just find art on the walls at the KIA – they can enjoy enriching experiences from art-making to experiential learning when they visit. The museum education department crafts a diverse schedule of programs, from film screenings to artist talks and demonstrations, to performances and collaborative ventures – an average of 10 programs a month, many of them free.

Our book discussions in the Mary and Edwin Meader Fine Arts Library have expanded to the point of outgrowing our library table space, and have relocated to our multi-purpose room. A guest leader leads a discussion of an art-related novel or work of non-fiction each month. In other library news, more than 1,000 items were checked out this year, and more than 400 new items were added to the catalog.

A programming highlight this year was the exhibition *My Hero: Contemporary Art and Superhero Action*. More than 3,000 schoolchildren toured the show on a field trip – boosting our school tour numbers by 30%. Adults enjoyed an ARTbreak performance, *Living Without a Cape*, by dancers from Wellspring/Cori Terry & Dancers, and the film *White Scripts and Black Supermen* with filmmaker Jonathan Gayles during Black History Month.

Sometimes we are able to take programs off-site, and this year, Art Detectives hit the road instead of taking the summer off. Arty and his volunteer handlers visited all five branches of the Kalamazoo Public Library to talk about and create art with young new friends and their families.

Encouraging artists of all ages is part of our mission, and the work of more than 1,000 budding artists was exhibited in our annual student exhibitions. *Young Artists of Kalamazoo County* brought record-breaking crowds with 3,390 attendees. Another record was made with the \$970,000 in scholarship awards offered to our *High School Area Show* artists by collegiate art schools.



From top left:

- Arty the Mouse and a young Art Detective enjoy making art together.
- Art teacher Doug Duncan from Prairie Ridge Elementary photographs an excited young artist and her work.
- September's Art Hop had a "See Your Selfie Back to School" theme.
- A student artist accepted into the High School Area Show is happy to pose with her work.
- Guests enjoy a conversation with Belinda Tate and photographer Dawoud Bey.





## Whom we served

---

**120** public events were presented

**18,902** visitors enjoyed KIA educational programs

**5,214** school-age youth enjoyed tours and youth programs

**3,814** guests attended free ARTbreak presentations

**309** artworks were submitted to the annual juried *High School Area Show*

**\$970,000** in prizes and college scholarships was awarded to student artists in the *High School Area Show*

**3,283** guests used the Meader Fine Arts Library

**3,390** guests attended *Young Artists of Kalamazoo County*

**2,543** hours of service were contributed by docents



When we say art is for everyone, we mean it! Staff and volunteer docents share art and conversation with visitors of all ages during field trips, tours, and "Get the Picture" gallery talks.



## Kirk Newman Art School

The art school's high-quality teaching and facilities combine to create unique and vital community-based art instruction for our region, and it should be no surprise that students and faculty have been included in regional and national art exhibitions.

Six residents were chosen for the 2017-18 school year, working in ceramics, print-making, and jewelry. The program produces talented artists who go on to master's level programs and professional art careers.

The Rosemary and John Brown Fund supported materials fees and tuition reductions for children's classes and camps, providing easier access to families. The fund also supported school improvements including iPads, taborets for painting, iMac computers, art school T-shirts, recalibrating the weaving looms, and new jewelry equipment.

Visiting-artist workshops allow our instructors to acquire new information and techniques and our students to learn from other instructors. This year, Clark Mitchell taught a plein-air workshop, Akira Satake taught *Finding Beauty in Ceramics*, and Dan Estabrook taught salt printing photo techniques. The Jim and Lois Richmond Workshop Fund subsidized all workshops, enabling more area artists to participate.

- 70** professional artists served as art school faculty
- 305** classes in 10 mediums were presented
- 3,308** students took an art class
- 790** children and teens enjoyed an art class or camp
- 310** scholarships were awarded to youth & adults
- 25** high school students studied here with KRESA's Education for the Arts



Left: Young artists explore paper construction in a summer camp.  
Above: Art school post-baccalaureate residents Lena Thomas, Kaylon Korsheed, and Sarah Parr working in the ceramics studio.



Top: Ceramist and teacher Susan McHenry shares the fun of throwing clay on the wheel with two guests at the school's hands-on event in March.

Middle: Painting student Ven Sandoval in the studio.

Bottom: Lauren Tripp (right) with jewelry students.



# Volunteers

## DOCENTS

### 2017-18 active docents

Vanita Aloisio  
Susan Baker  
Peggy Baxter  
Judi Beam  
Pam Boudreau  
Faye Brewer  
James Carter  
David Curl  
Nancy Draayer  
Sandy Ford  
Marilyn Garry  
Sam Grossman  
Mary Sue Hoffman  
Tracy Klinesteker  
Anne Lipsey  
Pam Mansager  
Judy Meyering  
Harvey Myers  
Brenda Murphy  
Peggy Napier  
Patrick Norris  
Scott Peterson  
Gwen Raaberg  
George Robeck  
Larisa Rozins  
David Senecal  
Paula Shelhamer  
Lyda Stillwell  
Norma Strong  
Judith Sullivan  
Diane Trupiano  
Brenda Turner  
Sara Wick  
Frank Wolf  
Jan Wolf  
JoAnn Yochim

Our community of volunteers has a material impact on the scope of programs and services we are able to provide. These dedicated men and women help us present an ambitious calendar of programs. They staff the Gallery Shop and evening events; lead tours for learners of all ages; and weigh in on matters of policy, direction, and sustainability as board and committee members. Although we are unable to list all our volunteers, we are grateful for their meaningful contributions of time and insight.

## BOARD OF DIRECTORS

Danielle Mason Anderson	Daniel Guyette Marissa Harrington	Jack Michael Peggy Napier	David M. Thoms Michelle Tombro Tracy
Peggy Baxter†	Kevin Jawahir	Mike Ouding	Thomas Turner
Susan Bowers	Sarah Parfet Jbara	William U. Parfet	Ashley Van Ek-Ten Brink
James Carter, M.D.	Ron Kitchens	Vince Pavone	Von Washington, Jr.
Linda Dunn	Lori Knapp	Priscilla Pedraza	*Also Kalamazoo Art League President, serving a two-year term.
Diane Eberts*	Cynthia Kole	Sabrina Pritchett-Evans	†Chair of the KIA Docent Council, serving a one-year term.
Anne Fassler	Pam Mansager	Gonzalo Rodriguez, Jr.	
Bjorn Green	Amy McClain	James Stephanak	

## COMMUNITY COMMITTEE MEMBERS

### ADVANCEMENT

Deanne Gavalis  
Judy Jolliffe  
Nancy Springgate  
Jamie Williams

### BUILDING & GROUNDS

Blair Bates  
Judi Beam  
Sandy Bliesener  
David Jarl  
Sondra Phillips

### COLLECTIONS

Michele Fabi  
Tom Lambert  
Tom Lollar  
Betty Upjohn Mason  
Sondra Phillips  
Frank Sardone  
Zoe Schuitmaker  
Ronda Stryker

### ENDOWMENT

Dean Bergy  
Bob Salisbury

### EXHIBITIONS

Barbara Brose  
Jeannie Claus  
Joy Light  
Nick Mahmat

### ROY SECOR

Roy Secor  
Brian Hudson  
Perry Wolfe

### ART SCHOOL

Barbara Brose  
Nancy Frost  
George Robeck  
Candice Roeder  
Dolores Smith

### MUSEUM EDUCATION

Christine Hahn  
Don Marek  
Anne Mehring  
Marsha Meyer  
Paula Shelhamer  
Mary Weber



Olga Albizu, *Untitled*, ca. 1965, oil on canvas. Collection of the Kalamazoo Institute of Arts. Elisabeth Claire Lahti Fund purchase

# Financial Statements

---

The KIA is fortunate to have dedicated volunteers serving on two financial oversight committees. The Finance Committee reviews the annual budget proposal and recommends it to the Board; it also reviews actual operating performance relative to budget projections throughout the year and reports the results to the Board.

The Endowment Committee reviews the investment performance of endowed funds and makes policy recommendations to the Board.

The committees jointly receive the report of audited financial statements and report the results to the Board.

## STATEMENT OF FINANCIAL POSITION

### ASSETS

Current assets	1,312,097
Investments held for endowment purposes	25,789,216
Property and equipment (net of depreciation)	6,973,069
TOTAL ASSETS	34,074,382

### LIABILITIES and NET ASSETS

Current liabilities	151,967
Net assets	33,922,415
TOTAL LIABILITIES & NET ASSETS	34,074,382

## STATEMENT OF ACTIVITIES

### SOURCES OF FUNDS

Public support and grants	2,144,119
Membership	306,763
Investment income	459,824
Net gain (loss) on investments	2,146,247
School tuition	596,955
Exhibitions	92,665
Gallery Shop and other sales	256,623
Building rental	92,379
Miscellaneous	2,108
TOTAL SOURCES OF FUNDS	6,097,683

### USES OF FUNDS

#### *Program Services:*

School	803,341
Museum education	201,824
Exhibitions and collections	615,705
Gallery Shop and other sales	197,746

#### *Support Services:*

Administration	739,813
Advancement and marketing	360,843
Facility operation and maintenance	919,526

*Change in net assets* 2,258,885

TOTAL USES OF FUNDS 6,097,683

## Sponsors

### MAJOR SPONSORS

John W. and Rosemary K.  
Brown Family Foundation  
Irving S. Gilmore Foundation  
Art Bridges Foundation  
Bronson Healthcare Group  
Dorothy U. Dalton Foundation  
Kalamazoo Community  
Foundation  
Kalamazoo Regional  
Educational Service Agency  
Marvin & Rosalie Okun  
Foundation  
Meijer  
PNC  
Santreece Foundation  
Stryker Corporation  
Tyler-Little Family Foundation  
David & Muriel Gregg Estate

### PRESENTING SPONSORS

Anonymous  
AVB  
Bell's Brewery, Inc.  
Borgess Health/Ascension  
Chemical Bank  
CWS Financial Advisors  
David Isaacson  
Fabri-Kal Corporation  
First National Bank of Michigan  
Friendship Village  
James & Lois Richmond  
James & Springgate, PLC  
Lakeview Ford Lincoln  
PlazaCorp Realty Advisors, Inc.  
River Street Flowerland  
Schupan & Sons, Inc.  
Si & Shirley Johnson  
Warner Norcross & Judd  
Youth United Way  
Zhang Financial  
Zoetis

### CONTRIBUTING SPONSORS

Arts Council of Greater  
Kalamazoo  
City of Portage  
CTS Telecom  
Fanfare  
Greenleaf Trust  
Harding's Markets  
Kalamazoo Public Library  
Kalamazoo Sportswear  
Kalamazoo Valley Community  
College  
Kalsee Credit Union  
Millennium Restaurant Group  
Modern Woodmen of America  
PrintMill  
Public Media Network  
RiverRun Press  
Williams Capital Management  
WMUK 102.1

Pewabic Pottery, *Blue Vase*, ca. 1920, ceramic with iridescent glaze. Collection of the Kalamazoo Institute of Arts, gift of Dr. Carey Charles

Hung Liu, *Lady Lotus*, 2016, mixed media on panel. Collection of the Kalamazoo Institute of Arts, Joy Light East Asian Art Acquisition and Exhibition Fund Purchase



## 2017-18 Annual Fund Donors Gifts of \$50 and above between September 1, 2017-August 31, 2018

---

Anonymous	Sarah & Alan Chase	Grace & Donald Flesche	Susan Kavanaugh
Judy & Thomas Abraham	Radine Cheever	Rita & Tom Fox	Dorothy Kelly
Bruce Aldrich	Lilia Chen	Sharon & James Froom	Irene & Donald Kent
Bonnie Aldrich & Glendon Toaz	Pat Chipman	Nancy Frost	Patricia & Richard Kirschner
Bonita Alkema	Elizabeth & Frederick Clem	Jennifer & Timothy Gatz	Lyn & Ron Kitchens
Melody Allen & Bruce Caple	Janet & Tom Clemons	Marilyn & Robert Geil	Mrs. Mary K. Kittredge
Vanita & Michael Aloisio	Shirley & Frank Cody	Jean & Alfred Gemrich	Patricia & Robert Kittredge
Marion & Saul Amdursky	Pat Cole & Jon Platt	Kristin & Mike Gerfen	Mary Klenow
Laurel Andrews	Kaye Collins	Patricia Gherardi	Lori Knapp & Michael Allen
Alice & Steve Antonioti	Joyce Latta & Thomas Conklin, Sr.	Michael Glass	Mr. Charles B. Knappen, III
Betty & Fred Antosz	Suzanne Cook	Norm Goodling	Peter Kobrak
Jo and Chet Arnold	Pam Hoppe & Doug Coulter	Lori & Bjorn Green	Gloria Kohut
Joan Atwell & Rodney Budka	Linda & Jeffrey Cox	Toni & Francis Gross	Cindy & Kevin Kole
Anna Aviza	John Crowell	Sue Grossman	Karen Kott
Pat & George Baltmanis	Dana & Theodore Cunningham	Gary & Ann Gunia	Pat Kreuzer
Carla & Alan Baublils	Ardyce & David Curl	Daniel Guyette	Laurel & Robert Kuehl
Rosalie Bauckham	Elizabeth K. Dapson	Carol Haenicke	Susan Kurtz
Judith & Robert Beam	Janet Deal-Koestner	Cynthia & Dean Halderson	Nelly Kurtzmann
Alaine Depner & Todd Beck	Carol & James Dean	Alexander Hall	Millie Lambert
Aimee Bedard	Angela Graham & Don Desmett	Wendy Hand	Tema & Robert Lando
Carol & Thomas Beech	Shari DeYoung-Pruis & Michael Pruis	Nancy Troff & Michael Harrell	Bonnie & Norman Langeland
Jane Beers	Ron Di Salvio	Paralee & Alfred Harris	Catherine Larson
Lynn & Thomas Belco	Sharon Carlson & Thomas Dietz	Denise Hartsough	Janet & Michael Leonard
Shannon & Larry Bell	Kathy Dilsaver	Mary Hatch	Julie & Keith Lewandowski
Margaret & Dean Bender	Nancy Diment	Diane & Jay Heckler	Kathy Lemmen & Neil Lewinski
Kathryn & Dean Bergy	Sandra & David Docsa	Sheryl & Michael Henderson	Jeanene Lewis
Avril & Malcolm Blair	Shreedevi & Umakant Doctor	Ginnie and Ed Hessler	Margo & Christopher Light
Gordon Boardman	Joseph & Alice Doe	Jane & Stephen Higgins	Sechoing & Shu-Tzu Lin
Janelle and Ron Boothby	Patricia & James Dolan	Susan & Dennis Hollar	Sandy & Fred Linabury
Katharine Boudeman	Karen & Donald Dombrowski	Jane Nelson-Holmes & John Holmes	Enola & James Liningier
Sharon & Sherwood Boudeman	Mary & Robert Doud	Ann Houser	Frances Liu & Terry Chiang
Marty & Robert Boughner	Robert Dunbar	Mary Lou Howard & John Howard	Judith Johnson & Mark Loehrke
Susan & Jon Bowers	Moyra Ebling	Connie and Fred Hubbell	Shelly Wisdom-Long & Richard Long
Sheila & William Bowser	Susan Eckhardt & Mary Eckhardt	Deborah & Reid Hudgins	Mary Alice Lovins
Martha & Larry Braithwaite	Colleen & Jim Edwards	Brigitte & Thomas Huff	Margaret Lyons
Marilyn Breu & John Schumacher	Nancy Ehrle	Kathy & Terry Hutchins	Linda & Frederick MacDonald
Sheila & Jim Bridenstine	Kathryn & David Eickholt	David Isaacson	Patricia & Frank Machnik
Kim Brodhagen	Bonnie & Loyal Eldridge	Virginia Jacobowitz	Linda & Dean MacVicar
Linda & Eric Brown	Lenore Ethridge	Karen H. Jacobs	Kathy & Bill Main
Gail & Mark Brown	Michele & Alain Fabi	Barbara & Jerry James	Maria & Seth Malin
Elaine & Vaikai Brown	Marilyn & Arthur Feinberg	Jerre James	Pam & Tom Mansager
Mary & Ed Buczkowski	Ann & Gary Fergemann	Martha Jamieson	Jeff Markel
John A. Burdick	Mary Fiebig	Sandi & James Jasper	Michele & James Marquardt
Kay & Mervin Burtis	Shon & Samuel Field	Jennifer & Kevin Jawahir	Elizabeth & Craig Martin
Patricia & Phil Burton	Mari Fifelski	Peggy & Steven Johnson	Danielle Mason Anderson & G. Trent Pierre
Dana & Steven Butt	Billie & Harold Fischer	Judy Jolliffe	David & Cheryl McCaffery
Carol & James Carter	Sonja & Conrad Fischer	Barbro & Norman Jung	Catherine & J. Michael McCarthy
Sharon & John T. Cerovski	Dorothy & Bert Fish	Linda & Joseph Kanamueller	Gunther Hega & Mary McCormick
Torry & Michael Chafy	Deborah & Kent Fisher	Shirley Kantoff	

## Annual Fund Donors *continued*

Theresa & Anthony McDonnell	Judith & John Provancher	Carole & James Smith	Carol & John Trittschuh
Tom & Valli McDougle	Kathryn Prusis	Paul Smithson	Brenda Turner
Joyce McNally	Jane & Jeffrey Puvogel	Sandra Smokoska	Patricia & Thomas Turner
Elizabeth & David McShane	Gwen Raaberg	Michele Sompels	Mary L. Tyler
Connie & Steven McWethy	Karen Randall	Sandra Spencer	Jo & Sam Van Boven
Constance Micklin	Phyllis Rappoport	Susanne Spencer	Norma Van Rheenen
Marilyn & David Milko	Sue Reichert	Natalie & Harvey Spivak	Vicki Vanas
Jodi & Matthew Milks	Evelyn J. Rensch	Linda & David Stafford	Courtenay & Jon VanderMolen
Anna Mae Miller	Lois & Jim Richmond	Celeste & Frederick Statler	Beverly Vandevusse
Linda & W. Joseph Mills	Karen & Noelle Ridley	Petey & James Stephanak	Anne & Bart vanGiessen
Lynn & Gregory Morris	Aaron Riker	Anne & Gale Stephens	Adelia & Peter VanMeter
Sally & Robert Morris	Donna Lou & Charles Ritter	M. Gayle Stephenson	Mary & John VanSlambrouck
Peggy Napier	Donna & David Roach	Debra Campbell & Jerry Stewart	Marilyn Vineyard
Gail Walter & Tom Nehil	Louise & George Robeck	Jon Stryker	Christine Walker
Susan Nelson	Mary & Carl Roberts	Deborah Gang & Alan Sylvester	Loretta Walsh
Arthur Nemitz, Jr.	Diane Robertson	Carmen Tanis	Dan Ward
Jeffrey & Barbara Nicholson	Dawn & Brian Roblyer	Dianne Tansey	Georgiana & Tim Washburn
Ed Niehus	Judith Roe	Belinda Tate	Frances & Von Washington
George Nielsen	Shirley Rohrer	Amy & Robert Taylor	Nira Watkins
Diane & Donald Nitz	Jane Rooks Ross & Barry Ross	Chris & Richard Thomas	Marian Klein & John Wattles
Louise & Mark Novitch	Sherri & Ryan Roth	Linnaea & John Thomas	Pam & Joshua Weiner
Pam & Martin Obed	Robin & Jonathan Rowe	Doreen & Edward Thomas	Carolyn Williams
Carla & Tom Obringer	Lynn & Rick Russell	Susan & David Thoms	Sharon & D. Terry Williams
Mary & Michael O'Connor	Jeanette Rybinsky	Patricia & Gerald Timm	Ruth and Ronald Wiser
Sally & Paul Olexia	Lynne Sage	Jane & John Todd	Joanne & Carl Wisner
Walter Olinskas	Linda & Robert Salisbury	Meri & Larry Tolbert	Perry Wolfe
Florence & Joel Orosz	Susan Fall & Frank Sardone	Kathryn Lamson & Steve Tompkins	Carol & Charles A. Yager
Kevin Osborn	Janet & David Scarrow	Michelle Tombro Tracy & Christopher Tracy	JoAnn & Raoul Yochim
Helen Osterwald	Janet & Don Scherzinger	Pauline Trembley	Pamela & Arno Yurk
Carolyn Ouding	Marilyn Schlack		Elizabeth Burns & Roger Zinser
Karen Vaughn Ouding & Michael Ouding	Jane Schley		
Laurel & Steve Palmer	Jean & Richard Schmitt		
Barbara & Bill Parfet	Peggy Jo & Eric Schreur		
Barbara J. & Preston S. Parish	Pam & Bill Scothorn		
Young-Ae Park & Ho Sung Lee	Barbara E. Scott		
Phyllis & Floyd Parks	Elaine & William Seaman		
Donna & Michael Parr	Elizabeth & Peter Seaver		
Vincent & Caroline Pavone	Roy Secor		
Nancy Englander & Ralph Pernice	Linda Servis		
Joyce & John Petro	Nanette & Norma Shields		
Lisa & Michael Phillips	Katherine & Christopher Shook		
Ann Paulson & William Pierce	Christina Yavarow & Benjamin Siems		
Patricia Pierce	Carol & David Simpson		
Mary Margaret Pipkin & Robert Boisture	Jacqueline & Daniel Skarritt		
Zaide Pixley & John Fink	Dean Ingraham & Linda Slack		
Lois & Frank Plaver	Margaret Small		
William Prentice	David Smallcombe		
Paula & Franklin Presler	Joanne & James Smith		
	Karmena Smith		
	Dolores Smith		



Dawoud Bey, *Untitled #1 (Picket Fence and Farmhouse)* from the series *Night Coming Tenderly, Black*, 2018. Collection of the Kalamazoo Institute of Arts, Elisabeth Claire Lahti Fund Purchase

## Business Members

---

### LEADER

Bell's Brewery, Inc  
Stryker Corporation

### AMBASSADOR

Amerifirst Home Mortgage  
John E. Fetzer Institute, Inc.

### CONTRIBUTOR

B.A.S.I.C.  
Borgess Health / Ascension  
Bronson Healthcare Group  
Chemical Bank  
CWS Financial Advisors  
Eckert Wordell, Architects LLC  
First National Bank of Michigan  
Greenleaf Trust  
Harding's Markets  
Honigman Miller Schwartz  
& Cohn LLP  
Inter-Source Recovery  
Systems, Inc  
James & Springgate, PLC  
Keyser Insurance Group  
Meyer C. Weiner Company  
Zhang Financial

### SUPPORTER

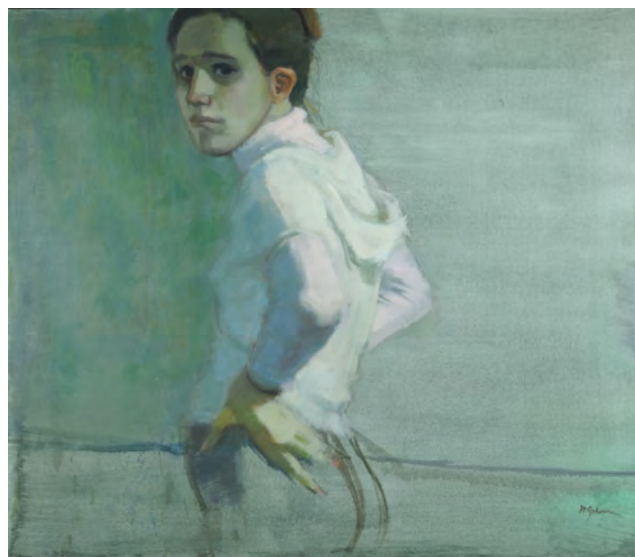
Allegra Print & Imaging  
AVB  
Burnham & Flower  
Insurance Group  
Fabri-Kal Corporation  
Fetzer Center  
Jeff K. Ross Financial  
Lakeview Ford Lincoln  
Lewis, Reed & Allen, P.C.  
Miedema, Kinney and  
Associates  
Newell Brands  
Newmind Group, Inc  
Old National Bank  
RiverRun Press  
The Connable Office, Inc  
VanderSalm's Flower Shop  
Venture Advisory Group  
Williams Capital Management  
Willis Law, PLC  
Wiser Financial Group

### ASSOCIATE

Consort Display Group  
Intersect Studio  
Jansen, Valk, Thompson &  
Reahm PC  
JP Morgan Chase  
Lawton Ridge Winery  
PrintMill  
Rx Optical  
SKP Design  
Stephen C. Trivers LLC



Philemona Williamson, *Tender Breeze*, 2008, oil on linen. Collection of the Kalamazoo Institute of Arts, purchased in memory of Martha Parfet through the generosity of her estate



Marilyn Johnson, *Portrait of Wendy*, 1974, oil on canvas. Collection of the Kalamazoo Institute of Arts, Helen Sheridan Memorial Fund Purchase.

# Major Individual Members

---

## VISIONARY

Shannon & Larry Bell  
Rosemary & John Brown  
Shreedevi & Umakant Doctor  
Richard Groos  
John Light  
Timothy and Joy Light Fund  
Letitia Loveless\* Living Trust  
Pam & Tom Mansager  
Elizabeth Mason  
Martha Parfet\*  
Barbara & Bill Parfet  
Barbara J. & Preston S. Parish  
Lois & Jim Richmond  
Diane Robertson  
Peggy Strong\*  
Jon Stryker  
Thomas & Nancy Woodworth

## LEADER

Carol & James Carter  
Izzy Grimes/Izzy's Lemon Aid  
Ginnie and Ed Hessler  
Hall Houseman Family Foundation  
Jerre James  
Shirley & Si Johnson  
Cindy & Kevin Kole  
Larsen Family Charitable Fund  
Margo & Christopher Light  
Connie and Stan Rajnak  
Susan & David Thoms  
Mary L. Tyler  
Marian Klein & John Wattles

## FOUNDER

Bonita Alkema  
Cynthia & Matthew Alves  
Marion & Saul Amdursky  
Judith & Robert Beam  
Katharine Boudeman  
Susan & Jon Bowers  
Sheila & Jim Bridenstine  
Susan & Bob Brown  
Kay & Mervin Burtis  
Sarah & Alan Chase  
Lilia Chen  
Ardyce & David Curl  
Diane & Randy Eberts  
Sandra J. Edwards &  
Alfred B. Garcia

Jennifer & James Evans  
Michele & Alain Fabi  
Sonja & Conrad Fischer  
Lori & Bjorn Green  
Toni & Francis Gross  
Carol Haenicke  
Jane & Stephen Higgins  
Brigitte & Thomas Huff  
Patti & Bob Huiskamp  
Sue Ellen & Robert Isachsen  
Thomas Kasdorf  
Patricia & Keith Kenter  
Lyn & Ron Kitchens  
Lori Knapp & Michael Allen  
Melanie Kroes-Cooper &  
Ric Cooper  
Kathryn & Edward Lee  
Kathy & Bill Main  
Michele & James Marquardt  
Elizabeth & Craig Martin  
Danielle Mason Anderson &  
G. Trent Pierre  
Connie & Hugh Mehaffie  
Sarah & Jack Michael  
Joey Miller & Paul Rehkopf  
Peggy Napier  
Louise & Mark Novitch  
Pam & Martin Obed  
Karen Vaughn Ouding &  
Michael Ouding  
Sarah Parfet Jbara & Steve Jbara  
Vincent & Caroline Pavone  
Priscilla & Gabriel Pedraza  
Patricia Pierce  
Louise & George Robeck  
Jeanette Rybinsky  
Linda & Robert Salisbury  
Susan Fall & Frank Sardone  
Marilyn Schlack  
Zoe & Harold Schuitmaker  
Elizabeth & Peter Seaver  
Dawn & Reed Shilts  
Carol & David Simpson  
Dolores Smith  
Susanne Spencer  
Nancy Springgate & Pete Kushner  
LaVonne Stavig  
Jane & John Todd  
Michelle Tombro Tracy &  
Christopher Tracy

Patricia & Thomas Turner  
Judith & Sherman Van Solkema  
Beverly Vandevusse  
Anne & Bart vanGiessen  
Carrie and Bill Venema  
Christine Walker  
Margaret & James Woodruff  
Pamela & Arno Yurk

## BENEFACTOR

Anonymous  
Cheri Arnold  
Maria Barros & Gary Price  
Aimee Bedard  
Carol & Thomas Beech  
Sue & Dennis Berkebile  
Avril & Malcolm Blair  
Gordon Boardman  
Sharon & Sherwood Boudeman  
Pat Chipman  
Dana & Theodore Cunningham  
Sara & Steven Curl  
Carolyn Pickett-Erway &  
Steve Erway  
Lenore Ethridge  
Grace & Donald Flesche  
Janell & David Foley  
M. Arlene Gardner  
Nancy Haner Memorial Fund  
for Nature, Arts & Literacy  
Veronica & Bassam Harik  
Nancy Troff & Michael Harrell  
Marissa Harrington  
Leigh Harrington  
Mara & Bob Hayes  
Diane & Jay Heckler  
Janet Heller & Michael Krischer  
Jane Nelson-Holmes &  
John Holmes  
Kathy & Terry Hutchins  
Karen H. Jacobs  
Shirley Johnson  
Celine & Thomas Keizer  
Irene & Donald Kent\*  
Mr. Charles B. Knappen, III  
Susan Knox  
Donna & Tom Lambert  
Tema & Robert Lando  
Amy Leasure  
Sandy & Fred Linabury

Linda & Frederick MacDonald  
Linda & Dean MacVicar  
Maria & Seth Malin  
Linda Manguiat-Herzog &  
Kevin Herzog  
Micki & Douglas Maxwell  
Marilyn & David Milko  
Anna Mae Miller  
Sally & Robert Morris  
Delores & Harvey Myers  
Jeffrey & Barbara Nicholson  
Annette Nickel  
Noel Ocen-Gorgone  
Carolyn Ouding  
Ann Parfet & Donald Parfet  
Joyce & John Petro  
Mary Margaret Pipkin &  
Robert Boisture  
Robin & Steven Pollens  
Kay Polzin  
Sabrina Pritchett-Evans  
Barbara Rider & Fred Sammons  
Drs. Gary & Cynthia Ruoff  
Roy Secor  
Jennalie & Joel Shepherd  
Margaret Small  
Scott & Karen Sperry  
Linda & David Stafford  
Veronica Stefanski &  
Allen Stefanski  
Belinda Tate  
Doreen & Edward Thomas  
Martha Todd  
Amy Upjohn &  
Bradley VandenBerg  
Martha & Henry Upjohn  
Norma Van Rheenen  
Courtenay & Jon VanderMolen  
Ashley VanEk-TenBrink &  
Daniel TenBrink  
Sharon & Kurt von Maur  
Pamela West  
Katie & James Williams  
JoAnn & Raoul Yochim\*  
Elizabeth Burns & Roger Zinser

\*deceased

*We regret any omissions or errors.  
Please inform us of any by emailing  
museum@kiarts.org.*



**KALAMAZOO INSTITUTE OF ARTS**

314 South Park Street, Kalamazoo, Michigan 49007

269/349-7775

[kiarts.org](http://kiarts.org)