



KALAMAZOO INSTITUTE OF ARTS
ANNUAL REPORT 2015-16

A year of growth

The Kalamazoo Institute of Arts exists to encourage making art, enjoying art, and learning through art. We believe the arts are for everyone, and seek to offer everyone in the community access to the power of art.

The number of people who visited the KIA grew by 16% this year, and the spectrum of whom we serve is broad. Our youngest guests might be here for a free Saturday program with Arty the Art Detective, for a school tour, a summer camp, or their first art class. Among our long-time fans, you'll find members who have supported us or taken classes in the art school for 20 years or more.

We seek to support artists throughout their journey. Each year, we exhibit art by grade-schoolers and high school artists—the latter in a show that facilitates an average of \$300,000 each year in awards and scholarships for teenagers. The West Michigan Area Show, Arts Fair, and Kirk Newman Faculty Review are juried opportunities for exposure and sales of fine art.

A good year ends with a balanced budget. Our increase in unrestricted grants and school revenue is a testament to a generous community and a hard-working staff who produced a successful bottom line for the second year in a row.

As a nonprofit museum with no tax support, we welcome giving in all forms. In addition to support from 399 Annual Fund donors, 2,650 members, and 83 area businesses, we received 8,000+ hours of service this year from 320 volunteers.

Throughout the institution, collaboration and partnership strengthen our ability to reach new audiences and draw them to the invaluable arts resource that is the KIA. We treasure our role as educational partner with parents and schools, and as a gathering place in the community. This was never more important than in the aftermath of the Kalamazoo tragedy in February 2016, when we opened our doors to the community as a place of solace and healing.

Your museum holds a collection of more than 4,700 treasures. Nearly 150 are on view, including works by American masters like John Singleton Copley, William Merritt Chase, Edmonia Lewis, Henry Ossawa Tanner, Robert S. Duncanson, Franz Kline, Milton Avery, and Helen Frankenthaler. Thank you for making sure that world-class works of art are here for everyone to learn from and enjoy.

The reach of the KIA is broad, extending beyond Southwest Michigan, via loans of our works and curated exhibitions to museums and galleries across the country. We're proud that the KIA helps keep Kalamazoo on the nation's cultural map.

We are committed to our vision to inspire and serve our diverse community through the arts. With your support, we are impacting lives in profound ways.

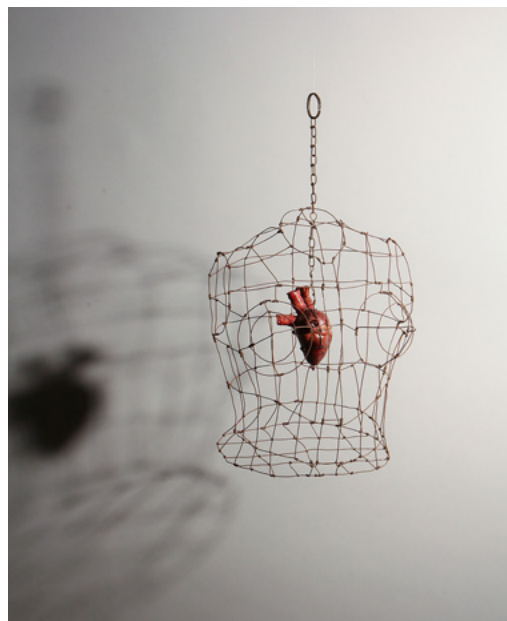
Belinda Tate, Executive Director
James Carter, Board Chair



Joel S. Allen, *Hooked on Svefte*, 2015, hand-wrapped fiber with mixed media. Courtesy of the artist. On the cover: Barbara Takenaga, *Night Painting (JFM)*, 2016, 60" x 70", acrylic on linen. Purchased with the Beatrice Oenslager Chace Fund, class of 1928, Smith College Museum of Art, Northampton, Massachusetts. Courtesy of DC Moore Gallery, New York



Jiha Moon, *Letter Shin (Yellow)*, 2014, cyanotype, ink, acrylic, rhinestones.
Courtesy of the artist



Renée Stout, *Armored Heart/Caged Heart*, 2005. Hand-formed found wire, fabric, acrylic paint. Courtesy of the artist

Exhibitions

Our 92nd year encompassed historic and contemporary work demonstrating a rich array of artistic approaches, unconventional media, and personal viewpoints.

Ten exhibiting artists traveled to the KIA to create unique installations of their work, making it a year full of opportunity for our community to meet nationally and internationally renowned artists at opening receptions, talks, demonstrations, and a visiting artist workshop. Three exhibitions presented contemporary blending of Western and Asian traditions and imagery, and five were solo shows. As always, the KIA continued its commitment to support Michigan artists—including our own art school faculty—through exhibitions.

Kirk Newman Art School Faculty Review

Jiha Moon: *Double Welcome, Most Everyone's Mad Here*

Suspended! Sculpture from ArtPrize 2015

Colour Correction: British and American Screenprints, 1967-75

High School Area Show

Young Artists of Kalamazoo County

Rhythms of Abstraction: Landscape Duets of Arnold Chang and Michael Cherney

West Michigan Area Show

Barbara Takenaga: *Waiting in the Sky II*

Eternal Beauty: Egg Tempera Paintings by Fred Wessel

Renee Stout: *Tales of the Conjure Woman*

Reaching into Infinity: Chul Hyun Ahn

Acquisitions

We use our collection to support creative learning in our community. This year, it grew by 59 works of art, largely due to gifts from artists, friends, and members. Some of these generous donors have given numerous treasured works from their private collections over the years, while others reached out to the KIA for the first time. The balance of acquisitions were purchases for the collection. The Elisabeth Claire Lahti Fund has supported the purchase of 100 works since 1998, while the newly established James A. Bridenstine Art Acquisition Fund has just begun to honor the KIA's longest-serving executive director, whose legacy includes substantial growth of the KIA collection.

GIFTS

GIFT OF JANET AND FRED SCHMIDT IN LOVING MEMORY OF FRANCES VORYS

Kirk Newman, *untitled*, 1958, welded steel on wood base, 2015.58

Stephen Hansen, *You are Here*, 1981, papier-mâché, 2015.59

GIFT OF KEITH AND NADINE PIERCE

Florence White Williams, *Distant Hills*, c. 1927, oil on canvas, 2015.60

GIFT OF CHRISTOPHER LIGHT

Christopher Light, *The Bean I, Millennium Park, Chicago, IL*, 2010, digital infrared photograph, 2015.63.1

Christopher Light, *Chicago's Bean 4*, 2010, digital photograph, 2015.63.2

Christopher Light, *Chicago's Bean 5*, 2010, digital photograph, 2015.63.3

Christopher Light, *Chicago's Bean 6*, 2010, digital photograph, 2015.63.4

Christopher Light, *Chicago's Bean 9*, 2010, digital photograph, 2015.63.5

Christopher Light, *Chicago's Bean 14*, 2010, digital photograph, 2015.63.6

Christopher Light, *Pine Branch, Morikami Gardens, Delray Beach, FL*, 2012, digital infrared photograph, 2015.63.7

Christopher Light, *Tree, Episcopal Church Courtyard, Palm Beach, FL*, 2012, digital infrared photograph, 2015.63.8

Christopher Light, *Nature Trail, Myakka River State Park, Sarasota, FL*, 2012, digital infrared photograph, 2015.63.9

Christopher Light, *Hills, Göreme, Turkey*, 2011, digital photograph, 2015.63.10

Harlan Hubbard, *untitled (riverbed)*, n.d., woodcut, 2015.64

Harlan Hubbard, *untitled (farmhouse)*, n.d., woodcut, 2015.65

GIFT OF DR. AND MRS. MICHAEL MOSKOVIS

Henry Wellge and A.F. Poole, *Bird's Eye View of Kalamazoo, Mich.* 1883, 1883, lithograph, 2015.66

GIFT OF JOHN N. COOPER II

Alfred Paul Maurice, *Chicago: Near West Side*, 1968, 1968, woodcut, 2016.1

Alfred Paul Maurice, *Mimos's Back Porch*, 1974, woodcut, 2016.2

GIFT OF SAM AND JEAN GROSSMAN

Lynn Geesaman, *Canal, Annevole Water Garden, Namur, Belgium*, 1989, gelatin silver print, 2016.3

GIFT OF FRANK HANSON

Richard A. Florsheim, *Twilight Anchorage*, n.d., wax and oil on canvas, 2016.4

Milton Hebal, *David and Goliath*, n.d., bronze on wood base, 2016.5

GIFT OF STAN AND CONNIE RAJNAK

Katsushika Hokusai, *Act IV, from the series The Storehouses of Loyal Retainers, a Primer*, n.d., woodblock print, 2016.6

Utagawa Toyokuni, *Kabuki Actor Onoe Matsuke as Townsman in Festival Outfit*, 1812, woodblock print, 2016.7

Utagawa Toyokuni, *Kabuki Actor Sawamura Tanosuke Portraying the Beautiful Courtesan Ochiyo*, n.d., woodblock print, 2016.8

Utagawa Kuniyoshi, *Deeds of the Faithful Warriors/The Story of the 47 Ronin*, 1846-47, woodblock print, 2016.9

Ando Hiroshige, *Inari Shrine at Oji from the series Famous Places in Edo*, n.d., woodblock print, 2016.10

Shoda Koho, *End of a Shopping Street*, n.d., woodblock print, 2016.11

Utagawa Kunisada, *untitled triptych*, n.d., woodblock print, 2016.12

GIFT OF LAWRENCE LITHOGRAPHY WORKSHOP AND MICHAEL SIMS

Zigmunds Priede, *Icarus*, 2015, lithograph, 2016.13



Luis Jimenez, *Assyrian Lion*, 2004, lithograph. Collection of the Kalamazoo Institute of Arts; Elisabeth Claire Lahti Fund Purchase

Beth Purdy, *Fact: When Tasmanian Devils are Upset their Ears Blush Bright Red*, 2014, oil on canvas.
Collection of the Kalamazoo Institute of Arts.
Ward and Cora E. Nay Director's Fund Purchase

GIFT OF THE KIRK NEWMAN ART SCHOOL CERAMICS DEPARTMENT

Simon Levin, *Bowl*, 2015, stoneware with inlaid glaze, 2016.17

GIFT OF TOM AND GAIL BIELEFELDT, BINGHAMTON, NY

Beatrice Bassette, *Return*, 1968, etching, 2016.19

GIFT OF DAVID AND DHERA STRAUSS

Robert Holty, untitled, n.d., oil on canvas mounted on paper board, 2016.20

GIFT OF KIRK NEWMAN

Gregory Waskowsky, *Two Skulls*, n.d., etching, 2016.21

GIFT OF PAUL G. SMITHSON

Peter M. Jogo, *Julian Creek*, 2001, mezzotint, 2016.22

Edgar Chahine, *Venise, La Lagune*, 1923, drypoint, 2016.23

Pablo Ruiz y Picasso, *Deux Vieillards et Voiler (from Lysistrata)*, 1934, etching, 2016.24

Eugène Delâtre, *Self-Portrait*, c. 1895, drypoint, 2016.25

GIFT OF HAROLD AND ZOE SCHUITMAKER

John M. Carney, *Toadstool Geologic Park, Nebraska*, 2015, 2015, carbon pigment print, 2016.27

PURCHASES

JAMES A. BRIDENSTINE ART ACQUISITION FUND PURCHASE

Janet Fish, *A.M.*, 1994, screenprint, 2016.14

Richard Bosman, *Porthole 11*, 2014, monoprint, 2016.15

Louis Comfort Tiffany, *Favrile Glass Lava Vase*, n.d., favrile glass, 2016.16

ELISABETH CLAIRE LAHTI FUND PURCHASE

Luis Jimenez, *Assyrian Lion*, 2004, lithograph, 2015.61 (shown opposite)

Roger Shimomura, *Nisei Trilogy: The Attack*, 2015, lithograph, 2015.62.1



Roger Shimomura, *Nisei Trilogy: The Camps*, 2015, lithograph, 2015.62.2

Roger Shimomura, *Nisei Trilogy: Return Home*, 2015, lithograph, 2015.62.3

Samuel Levi Jones, *Kristiana*, 2015, book remnants sewn on canvas, 2016.18

Christopher Ofili, *Title page from Black Shunga*, 2008-2015, etching with gravure on pigmented paper, 2016.26.1

Christopher Ofili, *Untitled from Black Shunga*, 2008-2015, etching with gravure on pigmented paper, 2016.26.2

Christopher Ofili, *Untitled from Black Shunga*, 2008-2015, etching with gravure on pigmented paper, 2016.26.3

Christopher Ofili, *Untitled from Black Shunga*, 2008-2015, etching with gravure on pigmented paper, 2016.26.4

Christopher Ofili, *Untitled from Black Shunga*, 2008-2015, etching with gravure on pigmented paper, 2016.26.5

Christopher Ofili, *Untitled from Black Shunga*, 2008-2015, etching with gravure on pigmented paper, 2016.26.6

Christopher Ofili, *Untitled from Black Shunga*, 2008-2015, etching with gravure on pigmented paper, 2016.26.7

Christopher Ofili, *Untitled from Black Shunga*, 2008-2015, etching with gravure on pigmented paper, 2016.26.8

Christopher Ofili, *Untitled from Black Shunga*, 2008-2015, etching with gravure on pigmented paper, 2016.26.9

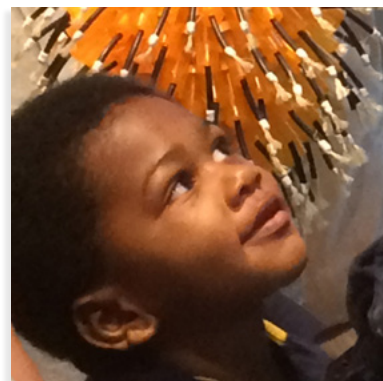
Christopher Ofili, *Untitled from Black Shunga*, 2008-2015, etching with gravure on pigmented paper, 2016.26.10

Christopher Ofili, *Untitled from Black Shunga*, 2008-2015, etching with gravure on pigmented paper, 2016.26.11

WARD H. AND CORA E. NAY DIRECTOR'S FUND PURCHASE

Barbara Thiery Buysse, *Relic Tree*, 2015, oil paint and found objects on cloth, 2016.28

Beth Purdy, *Fact: When Tasmanian Devils are Upset their Ears Blush Bright Red*, 2014, collaged paper, charcoal, and oil on canvas, 2016.29 (shown above)



Museum Education

Helping educators and parents introduce children to the museum is a key goal of our museum education staff. We had a significant increase in visitors to our Art Detectives program—which gives young children a chance to hear a story, visit the galleries, and make art to take home.

Since children are always free, we were happy to redesign and upgrade one of their favorite places: the Upjohn Mason Grandchildren Interactive Gallery on the lower level (thanks to the ongoing support of its benefactor). Fresh paint in bright colors, new art books, custom made furnishings and cushions, and several art-making stations with changing activities make it an even more inviting place for children of all ages.

More than 150 programs were offered this year, often presented with collaborative partners from the community, including Arcus Center for Social Justice Leadership at Kalamazoo Collage, the Gilmore Keyboard Festival Education Department, and the Merze Tate Travel Club.

Artists, curators, educators, performers, and docents help us offer tours, demonstrations, talks, presentations, performances, and exhibition openings throughout the year. Among our audiences are students of all ages, guests with vision impairment, and those coping with memory loss.

We unveiled a new film series, which screened work by area filmmakers with the support of Public Media Network, and continued partnering with the Kalamazoo Public Library and PMN to produce the Teen Filmmaker Festival. We offered professional development programs for public school teachers from Portage, Kalamazoo and Battle Creek Public Schools.



Counterclockwise from top left:

- The rapt faces of our youngest visitors show us the importance of seeing art at an early age.
- The ARTist program hosts school groups for gallery visits and art-making. Adam D., a kindergartner from St. Monica's Catholic School, created his own sculpture after viewing the art in the museum.
- We love being educational partners to parents, and showing that art supplies can be almost anything!
- We were happy to host art teachers Donna Emerson and Veronica Schaner among 85 educators at our first annual Teacher Appreciation Night.
- The redesigned Upjohn Mason Grandchildren Interactive Gallery is the 'please touch' space for young children and the young at heart.





Whom we served

- 153** public events were presented
- 14,492** visitors enjoyed KIA educational programs
- 2,719** school-age youth enjoyed tours and youth programs
- 3,838** guests attended free ARTbreak presentations
- 228** artworks were submitted to the annual juried *High School Area Show*
- \$308,000** in prizes and scholarships was awarded to artists in the *High School Area Show*
- 2,376** guests celebrated the opening of *Young Artists of Kalamazoo County*
- 500** hours of service were contributed by docents
- 4,870** students in 10 elementary schools viewed a traveling exhibition created for KRESA's Education for the Arts

Counterclockwise from top left:

- Anna Edlefon (left) and Layla Roberts joined us for the second annual Girls Can! collaborative open house in September.
- Visitors here for an evening with Read and Write Kalamazoo enjoy one of our collection works in the lower-level "traditional" gallery.
- We are a learning destination for area high school and college students.
- Artists exhibit and share significance of their work with visitors in gallery talks.

Kirk Newman Art School

The Kirk Newman Art School is a leading center for community-based art education. We welcomed our first cohort of post-baccalaureate resident artists in the fall. Five college graduates joined the art school community to advance their skills, enjoy faculty mentorship, and gain insights into the life of a working artist.

We joined with cultural partners to bring off-site classes to new audiences at the Kalamazoo Nature Center, Gilmore Car Museum, and Binder Park Zoo, while visiting artist workshops brought nationally-known artists to Kalamazoo. Fred Wessel, Thomas Allen, and Simon Levin taught workshops to advanced students--some of whom traveled far for the special opportunity--supported by the Jim and Lois Richmond Workshop Fund.

Scholarships totaling \$65,000 helped artists of all ages attend camps and classes, while funding from John and Rosemary Brown helped us lower tuition on all children's classes and install equipment upgrades in the studios. Active partnerships with the Hispanic American Council and the Black Arts & Cultural Center created greater diversity in our art camps and classes, and our hands-on night in March saw more than 400 people create art projects throughout the school.

- 70** professional artists served as art school faculty
- 290** classes in ten mediums were presented
- 2,934** students took an art class
- 775** children and teens enjoyed an art class or camp
- 240** scholarships were awarded to youth & adults
- 130** students studied here with KRESA's Education for the Arts



Clockwise from top:

- Printmaker Trevor Grabill "pulls" a print in the lower-level printmaking studio.
- The whole family comes to enjoy their young artist's last-day exhibition at summer camp.
- A pair of teens try their hand at painting during the hands-on night in the art school in March.
- Maleeha Elsadr, Sarah Mueller, Tamara Hirzel, Jenna Para, and Abbie Nelson, our 2015-16 post-baccalaureate resident artists.
- Painting instructor David Yeider consults with a young artist during a Saturday class.

Volunteers

DOCENTS

Susan Baker
Peggy Baxter
Judi Beam
Pam Boudreau
James Carter
David Curl
Kay Davis
Nancy Draayer
Sandy Ford
Ann Hawkes
Gayle Hoogstraten
David Isaacson
Martha Jamieson
Carol Janowicz
Tracy Klinester
Tracy Lynn
Pam Mansager
Judy Meyering
Harvey Myers
Patrick Norris
Scott Peterson
Gwen Raaberg
George Robeck
Larisa Rozins
David Senecal
Paula Shelhamer
Lyda Stillwell
Norma Strong
Judith Sullivan
Diane Trupiano
Brenda Turner
Sara Wick
Pat Wilcox
Nancy Wilson
Frank Wolf
Jan Wolf
JoAnn Yochim

Our community of volunteers has a material impact on the scope of programs and services we are able to provide. These dedicated men and women help us present an ambitious calendar of programs. They staff the Gallery Shop and evening events; lead tours for learners of all ages; and weigh in on matters of policy, direction, and sustainability as board and committee members. We haven't room for all our volunteers to be listed, but we are grateful for their meaningful contributions.

BOARD OF DIRECTORS

Danielle Mason Anderson	Michele Fabi Anne Fassler	Lori Knapp Pam Mansager	Nancy Springgate Jim Stephanak
Judi Beam	Bjorn Green	Jack Michael	Ronda Stryker
Susan Bowers	Daniel Guyette	Peggy Napier	Nancy Troff
Barbara Brose	Kevin Jawahir	Bill Parfet	Tom Turner
James Carter, President	Sarah Parfet Jbara	Vince Pavone	Ashley Van Ek
Linda Dunn	Pauline Jenson	Priscilla Pedraza	Billee Lightvoet Ward
Diane Eberts	Ron Kitchens	Gonzalo Rodriguez, Jr.	Von Washington, Jr.
Sid Ellis			K. Perry Wolfe

COMMUNITY COMMITTEE MEMBERS

Advancement

Deanne Gavalis
Judy Jolliffe
Jamie Williams
Ed Sackley

Building & Grounds

Blair Bates
Sandy Bliesener
David Jarl
Mike Ouding
Sope Oyelaran
Sondra Phillips

Collections

Tom Lambert
Tom Lollar
Betty Upjohn Mason
Sondra Phillips
Frank Sardone
Zoe Schuitmaker
Michelle Tombro Tracy

Endowment

Dean Bergy
Robert Salisbury
David Simpson

Exhibitions

Carol Beech
Jeannie Claus
Joy Light
Nick Mahmet
Roy Secor
Peg Strong
Michelle Tombro Tracy

Finance

Brian Hudson
Douglas Williams

Kirk Newman Art School

Nancy Frost
Mike Ouding
George Robeck
Candice Roeder
Dolores Smith

Museum Education

Christine Hahn
Don Marek
Anne Mehring
Marsha Meyer
Mary Weber



Utagawa Kuniyoshi, *Deeds of the Faithful Warriors/ The Story of the 47 Ronin*, 1846-1847, woodblock print. Collection of the Kalamazoo Institute of Arts. Gift of Stan and Connie Rajnak

Financial Statements

The KIA is fortunate to have dedicated volunteers serving on two financial oversight committees. The Finance Committee reviews the annual budget proposal and recommends it to the Board; it also reviews actual operating performance relative to budget throughout the year and reports to the Board.

The Endowment Committee reviews the investment performance of endowed funds and makes policy recommendations to the Board.

The committees jointly receive the report of audited financial statements and report the results to the Board.

STATEMENT OF FINANCIAL POSITION

ASSETS

Current assets	1,192,338
Long-term, unconditional promises to give	420,469
Cash-restricted for long-term purposes	1,533,142
Investments held for endowment purposes	20,390,669
Property and equipment (net of depreciation)	7,273,600
TOTAL ASSETS	30,810,218

LIABILITIES and NET ASSETS

Current liabilities	153,218
Net assets	30,657,000
TOTAL LIABILITIES & NET ASSETS	30,810,218

STATEMENT OF ACTIVITIES

SOURCES OF FUNDS

Public support and grants	2,285,367
Membership	314,786
Investment income	378,443
Net gain (loss) on investments	1,363,521
School tuition	533,938
Exhibitions	84,576
Gallery Shop and other sales	278,055
Building rental	85,908
Miscellaneous	1,619
TOTAL SOURCES OF FUNDS	5,326,213

USES OF FUNDS

Program Services:

School	744,413
Museum education	217,482
Exhibitions and permanent collection	425,075
Gallery Shop and other sales	198,998

Support services:

Administration	745,852
Advancement and marketing	332,945
Facility operation and maintenance	898,708

<i>Change in net assets</i>	1,693,089
-----------------------------	-----------

TOTAL USES OF FUNDS	5,326,213
---------------------	-----------

Sponsors

MAJOR SPONSORS

Beim Foundation
John W. and Rosemary K.
Brown Family Foundation
Dorothy U. Dalton Foundation
Irving S. Gilmore Foundation
Richard & Jane Manoogian
Foundation
Michigan Council for Arts &
Cultural Affairs
PNC
Santreece Foundation
Stryker
Stryker Johnston Foundation
Tyler-Little Family Foundation
Harold and Grace Upjohn
Foundation
W.S. and Lois VanDalson
Foundation

PRESENTING SPONSORS

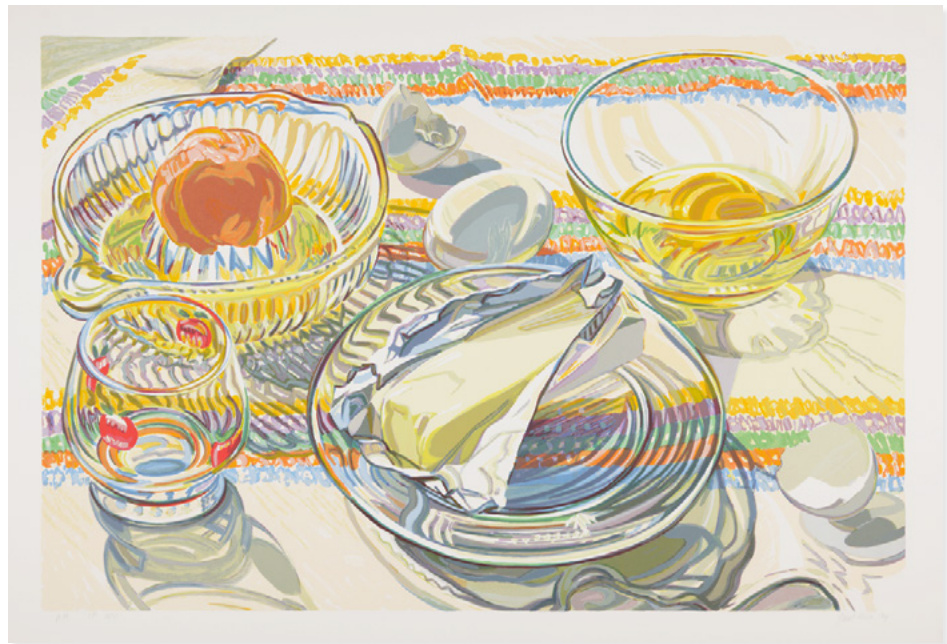
AVB
Biggby Coffee
Chemical Bank
Cross, Wietfeldt & Splendorio
Financial Advisors
Discover Kalamazoo
Greenleaf Trust
Kalamazoo Regional Educational
Service Agency/Education
for the Arts
ITC Holdings Corp.
National Endowment for the Arts
Pfizer
Plazacorp
Special-Lite
Zoetis

CONTRIBUTING SPONSORS

Bell's Brewery
DeNooyer Chevrolet
Eaton
Fabri-Kal
Friendship Village
Honigman Miller Schwartz
and Cohn LLP
James & Springgate PLC
KALSEE Credit Union
Modern Woodmen
River Street Flowerland
Schupan & Sons, Inc.
Warner Norcross & Judd

SUPPORTERS

Arts Council of Greater
Kalamazoo
Bronson Healthcare Group
CTS Telecom
The Fountains at Bronson Place
Harding's Friendly Markets
Kalamazoo Art League
Kalamazoo Public Library
Metro Toyota
Treystar



Janet Fish, *A.M.*, 1994, screenprint. Collection of the Kalamazoo Institute of Arts; James A. Bridenstine Art Acquisition Fund Purchase

2015-16 Annual Fund Donors Gifts of \$50 and above

Bonnie Aldrich & Glendon Toaz
 Bruce Aldrich
 Melody Allen & Bruce Caple
 Vanita & Michael Aloisio
 Marion & Saul Amdursky
 Ample Pantry
 Joan Atwell & Rodney Budka
 Ann & Mark Austin
 Shirley Bach
 Christine Ballard
 Pat & George Baltmanis
 Alice Balz
 Barbara Bauman
 Aimee Bedard
 Carol & Thomas Beech
 Heather & John Beering
 Jane Beers
 Lynn & Thomas Belco
 Margaret & Dean Bender
 Cynthia Berg
 Paul & Margaret Best
 Janet & Bijoy Bhuyan
 Avril & Malcolm Blair
 Gordon Boardman
 Janelle and Ron Boothby
 Sharon & Sherwood Boudeman
 Pamela Boudreau
 Marty & Robert Boughner

Norma & James Bour
 Joan & Edward Bradley
 Sheila & Jim Bridenstine
 Sally Bristol
 Patricia & Andrew Brogowicz
 Barbara & David Brose
 Linda & Eric Brown
 Ruth Brown
 Mary & Ed Buczkowski
 Kay & Mervin Burtis
 Dana & Steven Butt
 David Canvin
 Carol & James Carter
 William Castleberry
 Sharon & John T. Cerovski
 Sarah & Alan Chase
 Radine Cheever
 Pat Chipman
 Carol Christianson
 Lauretta Cillan-Chung
 Elizabeth & Frederick Clem
 Jayne Clement
 Janet & Tom Clemons
 Carol & Donald Coggan
 Susan Bourget & Peter Coles
 Suzanne Cook
 Linda & Jeffrey Cox
 Dana & Theodore Cunningham

Ardyce & David Curl
 Robert & Denise Davidoff
 Kay Ellen & Lee Davis
 Janet Deal-Koestner
 Carol & James Dean
 Joyce DeNooyer
 Adrienne & William DeNooyer
 Shari DeYoung-Pruis & Michael Pruis
 Sharon Carlson & Thomas Dietz
 Nancy Diment
 Catherine Doan
 David & Susan Doan
 Patricia & James Dolan
 Karen & Donald Dombrowski
 Mary & Robert Doud
 Nancy & Fred Douglas
 Greta & Glen Douglass
 Jim Duncan
 Linda & John Dunn
 Diane & Randy Eberts
 Moyra Ebling
 Nancy & Thomas Edmonds
 Bonnie & Loyal Eldridge
 Lenore Ethridge
 Michele & Alain Fabi
 Anne & Mike Fassler
 Ann & Gary Fergemann
 Mary Fiebig
 Mari Fifelski
 Sonja & Conrad Fischer
 Billie & Harold Fischer
 Marian & Ken Fisher
 Stephanie M. Fletcher
 Joan Foley
 Beverly B. & John C. Folz
 Rita & Tom Fox
 Annemarie & Wes Freeland
 Ranja & Stephen Friedman
 Marianne & Gerhard Fuerst
 Gail & Michael Galbreath
 Diane & David Gallivan
 Kristin & Mike Gerfen
 Patricia Gherardi
 Lynn Weimeister & Donald Gilmer
 Patricia & Larry Glass
 Dr. F. Claus Globig
 Norm Goodling
 Richard Groos
 Toni & Francis Gross
 Sue Grossman
 Laurel A. Grotzinger
 Genevieve Gudebski
 Ann & Gary Gunia
 Daniel Guyette
 H.P. & Genevieve Connable Fund
 Carol Haenicke
 Cynthia & Dean Halderson

Nancy Troff & Michael Harrell
 Alfred Harris, Jr.
 Mary Hatch
 Mara & Bob Hayes
 Julie Heath
 Sheryl & Michael Henderson
 Ginnie and Ed Hessler
 Candice Hill
 Darlene & LaVerne Hoag
 Lynette Brown & Daniel Hoff
 Susan & Dennis Hollar
 Jane Nelson-Holmes & John Holmes
 Jane & James Horn
 Ann Houser
 Kristin & Alan Hovestadt
 Mary Lou & John Howard
 Connie and Fred Hubbell
 Barbara & Joel Huber
 Deborah & Reid Hudgins
 Agnes Hughes
 Kathy & Terry Hutchins
 Irving S. Gilmore Foundation
 David Isaacson
 Fred Jackson
 Virginia Jacobowitz
 Karen H. Jacobs
 Jerre James
 Barbara & Jerry James
 Martha & Daniel Jamieson
 Judy & Robert Jansen
 Beth & David Jarl
 Pauline & Hal Jenson
 Deborah & Dennis Jewett
 Debby & Arnie Johnston
 Judy Jolliffe
 Barbro & Norman Jung
 Martha & Dr. Thomas Kakuk
 James Kalleward
 Linda & Joseph Kanamueller
 Nanette & Jack Keiser
 Kellogg's Corporate
 Citizenship Fund
 Dorothy & W. Quinn Kelly
 Hildy and Howard Kerney
 Barbara King
 Lyn & Ron Kitchens
 Mary & John Kittredge
 Patricia & Robert Kittredge
 Lori Knapp & Michael Allen
 Charles B. Knappen, III
 Susan Knox
 Cindy & Kevin Kole
 Marcus Kole
 Stacey & John Korycki
 Karen Kott
 Melanie Kroes-Cooper & Ric Cooper



Richard A. Florsheim, *Twilight Anchorage*, wax and oil on canvas. Collection of the Kalamazoo Institute of Arts. Gift of Frank Hanson

Annual Fund Donors *Continued*

Lakeview Ford Lincoln
 Millie Lambert
 Donna & Tom Lambert
 Bonnie & Norman Langeland
 Stephanie & Bryn Larsen
 Catherine Larson
 John & Jamie Lawlor
 Amy & David Lehr
 Janet & Michael Leonard
 Julie & Keith Lewandowski
 Jeanene Lewis
 Margo & Christopher Light
 John Light
 Joy & Tim Light
 Sechoing & Shu-Tzu Lin
 Sandy & Fred Linabury
 Marilyn Lindbeck
 Frances Liu & Terry Chiang
 Pat Llewellyn
 Mary Alice Lovins
 Eric Lyons
 Linda & Frederick MacDonald
 Barbara Mabee & Richard
 MacDonald
 Linda & Dean MacVicar
 Ann Maddox
 Kathy & Bill Main
 Maria & Seth Malin
 Pam & Tom Mansager
 Don Marek
 Michele & James Marquardt
 Elizabeth & Craig Martin
 Betty and Jerry Mason
 Danielle Mason Anderson &
 G. Trent Pierre
 Carol Maus
 David & Cheryl McCaffery
 Theresa & Anthony McDonnell
 Tom & Valli McDougale
 Patrick McGuire
 Elizabeth & David McShane
 Connie & Steven McWethy
 Kimberly Melvin
 Joyce & William Melvin
 Rita & Mike Metzner
 Kimberly Meyers
 Sarah & Jack Michael
 Constance Micklin
 Jodi & Matthew Milks
 Anna Mae Miller
 Joey Miller & Paul Rehkopf
 Dolores & William Miller
 Linda & W. Joseph Mills
 Victoria & William Mitchell
 Rebecca Moffett-Moore
 Sally & Robert Morris
 Dolores & Harvey Myers
 Nancy Haner Memorial Fund for
 Nature, Arts & Literacy
 Peggy Napier
 Gail Walter & Tom Nehil
 Susan Nelson
 Linh & Kristina Nguyen

Bonnie & Ed Niehus
 Karla Niehus
 George Nielsen
 Diane & Donald Nitz
 Louise & Mark Novitch
 Pam & Martin Obed
 Sally Olexia
 Florence & Joel Orosz
 Kevin & Elizabeth Osborn
 Carolyn Ouding
 Karen Vaughn Ouding &
 Michael Ouding
 Margaret Oudsema Tanner
 Barbara & Bill Parfet
 Sarah Parfet Jbara & Steve Jbara
 Barbara J. & Preston S. Parish
 Phyllis & Floyd Parks
 Donna & Michael Parr
 Diane & David Patton
 Carol Payne Smith
 Priscilla & Gabriel Pedraza
 Nancy Englander & Ralph Pernice
 Joyce & John Petro
 Pfizer Foundation Matching
 Gifts Program
 Patricia Pierce
 Ann Paulson & William Pierce
 Margaret Pifer
 Lois & Frank Plaver
 Barbara Ann Page & Roger Prior
 Judith & John Provancher
 Kathryn Prusis
 Sally & Tim Putney
 Jane & Jeffrey Puvogel
 Gwen Raaberg
 Phyllis Rappeport
 Shirley & Harold Ray
 Mr. & Mrs. Ken Reid
 Karen Richard
 Lois & Jim Richmond
 Barbara Rider & Fred Sammons
 Aaron Riker
 Donna Lou & Charles Ritter
 Louise & George Robeck
 Mary & Carl Roberts
 Diane Robertson
 Jane Rooks Ross
 Joanne Ross
 Robin & Jonathan Rowe
 Lynn & Rick Russell
 Kristi & Thomas Ryan
 Jeanette Rybinsky
 Janice & Edward Sackley
 Lynne Sage
 Linda & Robert Salisbury
 Susan Fall & Frank Sardone
 Marilyn Sassaman
 Janet & Don Scherzinger
 Marilyn & Larry Schlack
 Zoe & Harold Schuitmaker
 Barbara E. Scott
 Elaine & William Seaman
 Elizabeth & Peter Seaver



Roy Secor
 Colleen & David Semler
 Mimi & Phillip Settles
 Miriam Shannon
 Jennalie & Joel Shepherd
 Norma Shields
 Susan Shields
 Dawn & Reed Shiits
 Katherine & Christopher Shook
 Benjamin Siems & Christina
 Yavarow
 Joellen Silberman
 Carol & David Simpson
 Jacqueline & Daniel Skarritt
 Elizabeth Slocum
 Margaret Small
 David Smallcombe
 Judy & Daniel Smith
 Dolores Smith
 Joanne & James Smith
 Paul Smithson
 Natalie & Harvey Spivak
 Nancy Springgate & Pete Kushner
 Myra Willis & Steven Stankewicz
 Dr. Mary Staten-McCormick & Dr.
 Mark McCormick
 Lynn & Mike Steil
 Robert Stephan
 Petey & James Stephanak
 Anne & Gale Stephens
 M. Gayle Stephenson
 Ellen Harrington & John Stodola
 Peggy Strong
 Julie Sullivan & Bret Seely
 Belinda Tate
 Linnaea & John Thomas
 Patricia & Gerald Timm
 Jane & John Todd
 Marjean & Luis Toledo
 Lori Tomlinson
 Pauline Trembley
 Carol & John Trittschuh

Irene & Stephen Trivers
 Brenda Turner
 Patricia & Thomas Turner
 Mary L. Tyler
 United Way of the Battle Creek
 and Kalamazoo Region
 Jo & Sam Van Boven
 Ashley S. Van Ek
 Adelia & Peter Van Meter
 Norma Van Rheenen
 Courtenay & Jon VanderMolen
 Anne & Bart vanGiessen
 Carol Vuillemetot
 W. K. Kellogg Foundation
 Christine Walker
 Fred & Stephanie Wallace
 Loretta Walsh
 Dan Ward
 Peggy Warlick
 Georgiana & Tim Washburn
 Von Washington, Jr.
 Pam & Joshua Weiner
 Marsha & Neil Wester
 Carol & George White
 Patricia & Leonard Wilcox
 Sharon & D. Terry Williams
 Gloria Wise
 Ruth and Ronald Wiser
 Joanne & Carl Wisner
 Anne & Perry Wolfe
 Carolyn & Foster Woodward
 Vicki C. Wright
 Carol & Charles A. Yager
 JoAnn & Raoul Yochim
 Pamela & Arno Yurk
 Joyce Zastrow
 Amanda & Peter Ziemkowski
 Elizabeth Burns & Roger Zinser

*We regret any omissions or errors.
 Please inform us of any by emailing
 museum@kiarts.org.*

Business Members

LEADER

Stryker

AMBASSADOR

Pfizer, Inc.
Bell's Brewery, Inc.
John W. Fetzer Institute Fund

CONTRIBUTOR

Abraxas
B.A.S.I.C.
Borgess Health
Bronson Healthcare Group
Chemical Bank
Greenleaf Trust
Harding's Friendly Markets
Honigman Miller Schwartz
& Cohn LLP
Inter-Source Recovery
Systems, Inc.
James & Springgate, LLC
KALSEE Credit Union
Keyser Insurance Group
Landscape Forms, Inc
Meyer C. Weiner Company
Miller, Canfield, Paddock
& Stone PLC
MPI Research, Inc.
The Connable Office, Inc.
VML
Zoetis

SUPPORTER

Allegra Print & Imaging
AVB
BDO USA, LLP
Burnham & Flower
Insurance Group
Consumers Credit Union
Consumers Energy
DeNooyer Chevrolet
Eckert Wordell, Architects LLC
Fabri-Kal Corporation
Fetzer Center at WMU
First National Bank of Michigan
Gordon Water Systems
Horizon Bank
Lakeview Ford Lincoln
Lawton Ridge Winery
Lewis, Reed & Allen, P.C.
Miedema, Gemmill, Kinney,
& Associates
Newmind Group, Inc.
Old National Bank
RiverRun Press
Strategic Solutions
Summit Polymers
VanderSalm's Flower Shop
Venture Advisory Group
Wiser Financial Group
WKZO

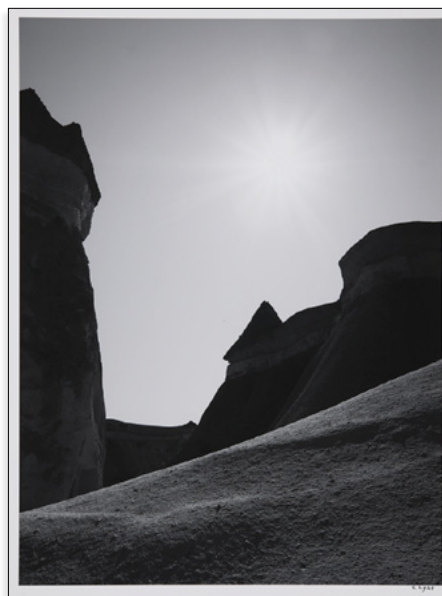
ASSOCIATE

1st Source Bank
Ambati Flowers
Ample Pantry
Consort Display Group
Dickinson Wright, PLLC
Dividend Mortgage, Inc
Impact Label Corporation
Jansen, Valk, Thompson
& Reahm PC
Langeland Family Funeral
Homes
Meijer, Inc.
Modernistic
SKP Design
Stephen C. Trivers LLC
Superior Imaging Services
TSI Consulting Partners
Willis Law, PLC

*We regret any omissions or errors.
Please inform us of any by emailing
museum@kiarts.org.*

Right:
Zigmunds Priede, *Icarus*, 2015,
lithograph. Collection of the
Kalamazoo Institute of Arts.
Gift of Lawrence Lithography
Workshop and Michael Sims

Far right:
Christopher Light, *Hills, Göreme,
Turkey*, digital photograph.
Collection of the Kalamazoo
Institute of Arts. Gift of the artist



Upper-Level Individual Members

DIRECTOR'S CIRCLE

VISIONARY

Richard Groos
Jon Stryker

DIRECTOR'S CIRCLE

LEADER

Judith & Robert Beam
Ann Garfield Wright &
Corey William Cook
Shreedevi & Umakant Doctor
Toni & Mark Jones
Pam & Tom Mansager
Barbara & Bill Parfet
Barbara J. & Preston S. Parish
Diane Robertson
Janice & Edward Sackley
Nancy Springgate & Pete Kushner
Ronda Stryker & William Johnston
Marian Klein & John Wattles

DIRECTOR'S CIRCLE

FOUNDER

Bonita Alkema
Sheri & Jonathan Boos
Susan & Jon Bowers
Sheila & Jim Bridenstine
Rosemary & John Brown
Susan & Bob Brown
Kay & Mervin Burtis
Sarah & Alan Chase
Ardyce & David Curl
Diane & Randy Eberts
Sandra J. Edwards &
Alfred B. Garcia
Michele & Alain Fabi
Marian & Ken Fisher
Lori & Bjorn Green

Ginnie and Ed Hessler
Brigitte & Thomas Huff
Patti & Bob Huiskamp
Jerre James
James Kalleward
Thomas Kasdorf
Irene & Donald Kent
Donna & Tom Lambert
Margo & Christopher Light
Joy & Tim Light
Betty and Jerry Mason
Connie & Hugh Mehaffie
Sarah & Jack Michael
Joey Miller & Paul Rehkopf
Karen Vaughn Ouding &
Michael Ouding
Sarah Parfet Jbara & Steve Jbara
Vincent & Caroline Pavone
Connie and Stan Rajnak
Lois & Jim Richmond
Louise & George Robeck
Linda & Robert Salisbury
Susan Fall & Frank Sardone
Marilyn & Larry Schlack
Zoe & Harold Schuitmaker
Elizabeth & Peter Seaver
Carol & David Simpson
Judy & Daniel Smith
Dolores & Herman Smith
Scott & Karen Sperry
Peggy Strong
Jane & John Todd
Michelle Tombro Tracy &
Christopher Tracy
Mary L. Tyler
Judith & Sherman VanSolkema
Margaret & James Woodruff

BENEFACTOR

Cynthia & Matthew Alves
Marion & Saul Amdursky
Aimee Bedard
Sue & Dennis Berkebile
Katharine Boudeman
Carol & James Carter
Torry & Michael Chafty
Dana & Theodore Cunningham
Joyce DeNooyer
Cheryl Dickson
Linda & John Dunn
JoAnne Eilenberg
Valerie & David Flagler
Toni & Francis Gross
Laurel A. Grotzinger
Carol Haenicke
Gerald Harty & Jon Durham
Mara & Bob Hayes
Diane & Jay Heckler
Jane Nelson-Holmes &
John Holmes
Kathy & Terry Hutchins
Shirley Johnson
Celine & Thomas Keizer
Lori Knapp & Michael Allen
Thomas K. Kocher
Melanie Kroes-Cooper & Ric Cooper
Doris Kunkle
Stephanie & Bryn Larsen
Mary Larson

Marcia Liepman
Linda & Dean MacVicar
Joy & Christopher Markin
Elizabeth & Craig Martin
Micki & Douglas Maxwell
Joan & Bill McDonald
Peggy Napier
Kay & Robert O'Boyle
Eileen Wilson-Oyelaran &
Olasope Oyelaran
Ann & Donald Parfet
Priscilla & Gabriel Pedraza
Patricia Pierce
Mary Margaret Pipkin & Robert
Boisture
Kay & John Polzin
Sabrina Pritchett-Evans
Susan Carter & Jim Rojeski
Drs. Gary & Cynthia Ruoff
Paula Shelhamer
Dawn & Reed ShiIts
Linda & David Stafford
Julie Sullivan & Bret Seely
Martha & Henry Upjohn
Beverly Vande Vusse
Courtenay & Jon VanderMolen
Carrie and Bill Venema
Henry Von Schreiner
Christine Walker
Mary Weber
Sally Williams

*We regret any omissions or errors.
Please inform us of any by emailing
museum@kiarts.org.*

