



KALAMAZOO INSTITUTE OF ARTS  
ANNUAL REPORT 2014-15

# A year of change

---

As the Kalamazoo Institute of Arts celebrated its 90th anniversary, 2014 became the first year in nearly 25 with new leadership at the helm when Belinda Tate joined the organization as our new executive director.

Building upon Jim Bridenstine's esteemed legacy, Ms. Tate's energy and vision proved ideal to take us through a year devoted to new ideas and creative change.

We couldn't accomplish all we have without the dedication of our KIA staff to do tremendous work with limited resources.

As we meet our future, we are devoted to four focus areas of our strategic plan: visitor engagement, arts education, diversity, and organizational sustainability.

We will continue to provide transformative experiences for visitors; to be the recognized leader and partner in visual arts education; to know and understand our audiences; and create and provide programming that invites, embraces, and is inclusive of all communities.

**James Carter, MD**  
**Board President**

I believe the arts are for everyone and extend a warm welcome to all to enjoy life-enriching experiences at the KIA's museum and school.

Thank you for welcoming me to the community and joining the KIA for stellar exhibitions, talks, art-making, films, performances, and art camps and classes.

This year we launched a comprehensive schedule of Black History Month activities and completed the American Alliance of Museum's Assessment Program.

We collaborated with organizations throughout the community, and attracted fresh audiences of all ages for free programs including Everyone's A Member Day, Art Hop, and Art Detectives.

So many give of their time and resources to sustain this magical arts institution, and I am personally grateful for your support. You have the KIA's commitment to continue being a people-first, service-focused place for you, your friends, and your family.

**Belinda Tate**  
**Executive Director**





Seungmo Park, *Maya 1316*, 2012, stainless steel wire mesh



Nina Belle Ward, *Portrait of a Lady in Black*, ca. 1912. Collection of the Kalamazoo Institute of Arts; Gift of A. Pitzer Ward

## Exhibitions

---

Our 91st year began with exhibitions honoring our past, and continued with exhibitions of East Asian sculpture, photography, and printmaking. The season came full circle to pay homage to one of the KIA's 'foremothers,' Nina Belle Ward, who was an advocate for the museum as host for area artists, a belief we continue to embrace. Throughout, the focus was on balancing old and new, collection works and traveling exhibitions.

### EXHIBITION SEASON

September, 2014 - August, 2015

**A Collector's Eye: Works from the Collection of Sheila and Jim Bridenstine**

**Lasting Legacy:**

**A Collection for Kalamazoo**

**How to Return? Contemporary Chinese Photography**

**Double Take:**

**Artists Respond to the Collection**

**Wired and Wrapped: Sculpture by Seungmo Park**

**Young Artists of Kalamazoo County**

**Redefining the Multiple: 13 Japanese Printmakers**

**Second Sight/Insight II**

**High School Area Show**

**Chinese Folk Pottery: The Art of the Everyday**

**West Michigan Area Show**

**Rediscovering Nina Belle Ward**

**Adaptation: Transforming Books into Art**

**Flowers in Chinese Art**

**Manierre Dawson:**

**Engineering Abstraction**

**Common Ground: African American Art from the Flint Institute of Art, the Kalamazoo Institute of Arts, and the Muskegon Museum of Art**

# Acquisitions

Our collection grew by 73 works of art this past year, highlighted by a number of gifts from generous artists, friends, and members. Works by Kirk Newman, Salvador Dali, Mathias Alten, Marcia Wood, and others enriched our collection. Through the Joy Light Fund for East Asian Acquisitions and Exhibitions, we were able to purchase seven works from the exhibition *Redefining the Multiple: 13 Japanese Printmakers*. A generous gift from John Loring enabled the purchase of nine old master European prints by artists including Andreani, Carracci, Goltzius, and Tiepolo.

## GIFTS

### GIFT FROM THE ESTATE OF ANNE CLARK

Marcia Wood, *Prospect* (maquette for Kalamazoo College sculpture), 1982, cast aluminum, 2014.123

Marcia Wood, title unknown, n.d., bronze, 2014.124

### GIFT OF CHRISTINA AND BILL COLLINS

Takeshi Katori, *The Golden Ring II*, n.d., color etching, 2015.12

Takeshi Katori, *Autumn Colors*, 2006, color etching, 2015.13

Takao Kakuma, *The Sun is Rising*, n.d., lithograph, 2015.14

Ray Morimura, *Kamakura Sugimoto*, 1985, woodblock print, 2015.15

### GIFT OF DAVID DRIESBACH

Kirk Newman, *Office Series*, n.d., lithograph, 2015.7

Kirk Newman, *Candy Cane*, n.d., color viscosity etching, 2015.8

Kirk Newman, *Quick Eddie*, n.d., painted bronze relief, 2015.9

Kirk Newman, *Untitled (two men walking and standing woman)*, n.d., bronze relief, 2015.10

### GIFT OF JOHN AND JANICE DRIESBACH

David Driesbach, *A Sip of Honey*, 1978, color intaglio, 2015.11

### GIFT OF THE ESTATE OF ELEANORE ALTEN GILLES

Mathias J. Alten, *Husking Corn at Dusk*, 1915, oil on canvas, 2014.127

### GIFT OF FRANK HANSON

Balcomb Greene, *Tangiers*, c.1965, oil on canvas, 2015.3

### GIFT OF SCOTT MATHESON HITCHCOCK

Reginald Gammon, *Home on Leave*, 1974, oil on canvas, 2015.39

### BEQUEST OF GENEVIEVE AND DONALD S. GILMORE

Alexander Brook, *Dried Leaf*, n.d., oil on canvas, 2015.40

### GIFT OF GEORGE C. KENNEY

Paul César Helleu, *Alice (the artist's wife at twenty)*, n.d., drypoint in black ink, 2015.37

Paul César Helleu, *Alice (the artist's wife at twenty)*, n.d., drypoint in sepia ink, 2015.38

### GIFT OF THE LORING FAMILY

Edward D'Arcy Loring, *Self-portrait*, c. 1918, oil on canvas, 2014.119

Weller Pottery, *Vase*, n.d., glazed ceramic, 2014.120

Hampshire Pottery, *Vase*, n.d., glazed ceramic, 2014.121

### GIFT OF KIRK NEWMAN

Kirk Newman, *Preparatory drawing for "The Next Step"*, c.1985, graphite on paper, 2014.122

David Driesbach, *The Everyday Occurrence*, 1976, engraving, 2015.4

David Driesbach, *Albert's Dog*, 1973, engraving, 2015.5

Kirk Newman, *Preparatory drawing for "The Next Step"*, c.1985, graphite on paper, 2015.29

### GIFT OF PAUL MANSKY

Paul Mansky, *Tunnel View #2 Yosemite*, 2014, platinum/palladium print, 2015.56

### GIFT OF BETTY UPJOHN MASON

Kirk Newman, *Forward*, AP, 1986, etching, 2015.30

### GIFT OF ELEANOR H. PINKHAM

Leon Pescheret, *Musician's Balcony*, 1931, etching, 2015.1

### GIFT OF STEPHEN POWELL

Salvador Dali, *The Last Supper*, 1978, platinum bas-relief, 2015.42

Salvador Dali, *Cycles of Life: One's Identity*, 1979, intaglio, 2015.43.1

Salvador Dali, *Cycles of Life: Reflection*, 1979, intaglio, 2015.43.2

Salvador Dali, *Cycles of Life: Vigors of Youth*, 1979, intaglio, 2015.43.3

Salvador Dali, *The Impossible Dream*, 1980, etching, 2015.44

Salvador Dali, *Birth of Venus*, 1979, lithograph, 2015.45

Salvador Dali, *Celestial Elephant (Space Elephant)*, 1979, lithograph, 2015.46



Mathias J. Alten, *Husking Corn at Dusk*, 1915, oil on canvas. Collection of the Kalamazoo Institute of Arts; Gift of the Estate of Eleanore Alten Gilles

Shoji Miyamoto, *Ikra Falls*, 2011, woodblock print.  
Collection of the Kalamazoo Institute of Arts; Purchase: Joy  
Light East Asian Art Acquisition and Exhibition Fund

#### **GIFT OF PAUL G. SMITHSON**

Lebadang, *Le Miroir de la Nu*, 1989, handmade  
paper construction, 2014.125

Tamekane Yoshikatsu, *The Age of Stars - S*, 2005,  
woodblock with metal leaf, 2014.126

Erik Desmazières, *Views of Amsterdam: The  
Amstelhof*, 2004, etching, 2015.2.1

Erik Desmazières, *Views of Amsterdam:  
Het Scheepvaarhuis*, 2004, etching,  
2015.2.2

Erik Desmazières, *Views of Amsterdam:  
Herengracht*, 2004, etching, 2015.2.3

Erik Desmazières, *Views of Amsterdam:  
Entrepotdok*, 2004, etching, 2015.2.4

Erik Desmazières, *Views of Amsterdam:  
's Lands Zeemagazijn*, 2004, etching, 2015.2.5

Shizuo Ashikaga, *Yellow Finch*, n.d., color woodcut,  
2015.31

Edgar Chahine, *Louise France*, 1902, etching,  
2015.32

Erik Desmazières, *Atelier René Tazé IV*, 1992,  
etching, aquatint, roulette, 2015.33

Erik Desmazières, *Atelier René Tazé V*, 1993,  
etching, aquatint, roulette, 2015.34

Henry Farrer, *Sunset*, 1880, etching,  
2015.35

William Paden, *Doma*, n.d., woodcut, 2015.36

#### **GIFT OF ZOE AND HAROLD SCHUITMAKER IN HONOR OF THEIR 49TH WEDDING ANNIVERSARY**

Joseph King, *Tea Tines (Tea Pot)*, 2015, stoneware  
and antler, 2015.41

#### **GIFT OF JOAN SHARDA IN HONOR OF THE ARTIST**

Joseph Brown, *Aerial View - Farm*, n.d., pastel,  
2015.6

#### **GIFT OF JUDITH TUMMINO**

Judith Tummino, *Self with Braid*, 2015, oil on  
canvas, 2015.57

#### **GIFT OF HARRY WILKS**

Harry Wilks, *High Line #48*, 2014, archival inkjet  
print, 2015.17

Harry Wilks, *Queensboro Bridge #50*, 2010,  
archival inkjet print, 2015.18

### **PURCHASES**

#### **ELISABETH CLAIRE LAHTI FUND PURCHASE**

Harry Wilks, *Manhattan Bridge #42*, 2010, archival  
inkjet print, 2015.16

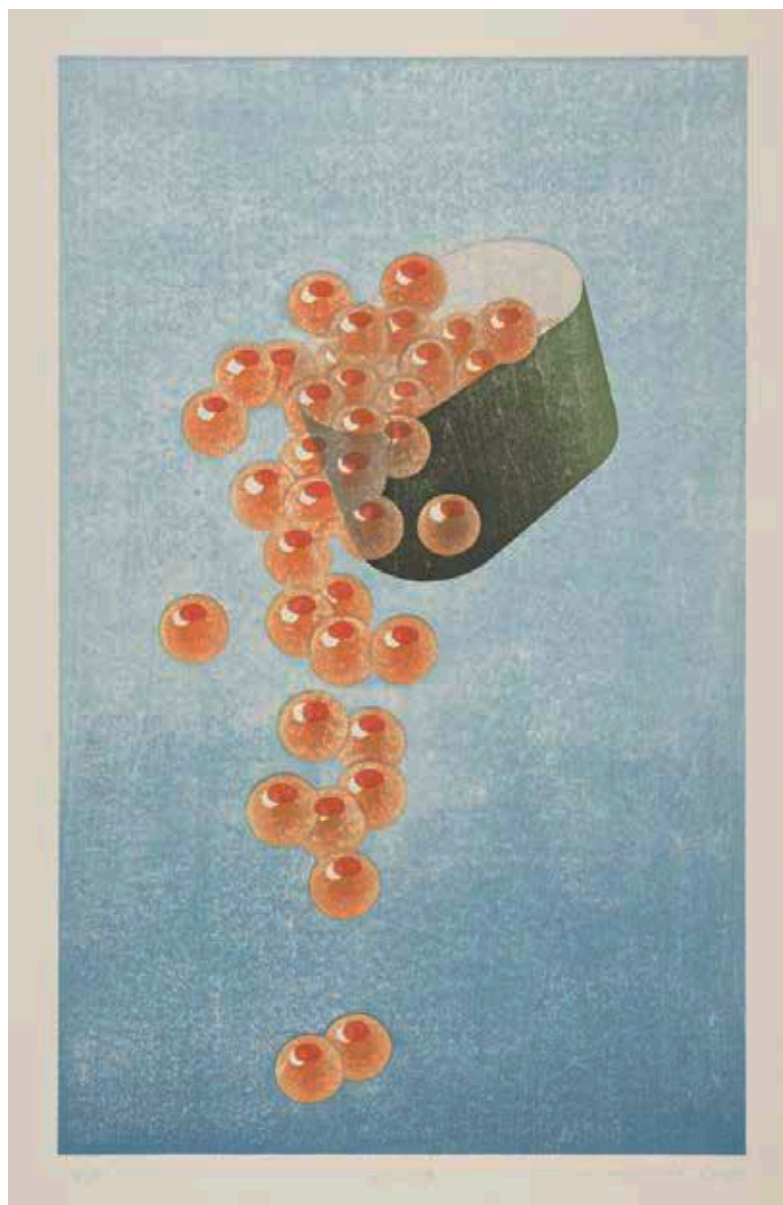
#### **JOY LIGHT EAST ASIAN ART ACQUISITION AND EXHIBITION FUND PURCHASE**

Hideki Kimura, *Glass 2010-8-30*, 2010, acrylic  
squeezeed onto glass, 2015.19

Hideki Kimura, *Glass 06-12-29*, 2010, acrylic  
squeezeed onto glass, 2015.20

Chiaki Shuji, *Sky Flow I*, 2007, etching, aquatint,  
drypoint, 2015.21

Chiaki Shuji, *Sky Flow II*, 2007, etching, aquatint,  
drypoint, 2015.22



Shoji Miyamoto, *Ikra Falls*, 2011, woodblock print,  
2015.23

Shoji Miyamoto, *A Piece of Steak*, 2010,  
woodblock print, 2015.24

Nobuaki Onishi, *Shovel*, 2011, cast resin with  
painting, 2015.25

#### **PURCHASED WITH FUNDS GIVEN BY JOHN LORING**

Jean-Baptiste Oudry, *Dogs Attacking Deer*, n.d.,  
etching, 2015.47

Philip Galle, *Baptism of the Eunuch by Saint Philip*,  
1575, engraving, 2015.48

Hendrick Goltzius, *Mercury*, 1592, engraving,  
2015.49

Andrea Andreani, *The Trumpeters and Standard  
Bearers*, 1599, chiaroscuro woodcut, 2015.50

Andrea Andreani, *The Vase Bearers and  
Trumpeters*, 1599, chiaroscuro woodcut, 2015.51

Enea Vico, *Tarquinius and Lucretia*, c.1560,  
engraving, 2015.52

Stefano della Bella, *The Arch of Constantine and  
Colosseum*, 1656, etching, 2015.53

Lodovico Carracci, *The Virgin and Child with  
Angels*, c. 1595-1610, etching, 2015.54

Giovanni-Domenico Tiepolo, *Armor and Trophies of  
the Roman Army*, etching, 2015.55

#### **THE WARD H. AND CORA E. NAY DIRECTOR'S FUND PURCHASE**

Elisabeth Carnell, *L'essentiel est Invisible*, n.d.,  
saggar-fired white stoneware, 2015.26

Mary Whalen, *Nest*, 2015, tintype, 2015.27

Mary Whalen, *untitled*, 2015, tintype, 2015.28

#### **PURCHASED WITH DONATED FUNDS**

Ed Fraga, *Self-portrait*, 1980-81, colored pencil on  
Rives paper, 2014.128



## Museum Education

Helping visitors of all ages enjoy and engage with the art on view in the museum is the special talent of our museum education staff, who served thousands of guests last year with demonstrations, performances, group tours, and artist talks. They provided a traveling exhibition to area schools; trained our exceptional corps of docents; and supported educators from elementary through college with resources, networking, and opportunities for professional development.

The Meader Fine Art Library provided more than 3,000 visitors with resources to expand their knowledge of art and art-making. Book discussions and our Art Detectives programs were opportunities for free and lively art-related activities.

Our youngest patrons include students on group tours and artists in the annual *Young Artists of Kalamazoo County* exhibition. High school artists were served by our annual Portfolio Day, Teen Filmmaker Festival, and *High School Area Show*. The artists in that show were awarded more than \$300,000 in scholarships from participating art schools and collegiate art programs at the opening reception.

### Counterlockwise from left

- Tours always start in the lobby, where the soaring atrium shows off sculpture hanging from above, including works by sculptor Alexander Calder and glass master Dale Chihuly.
- Extensively trained KIA volunteer docents lead tours for children and adults.
- Field trip pals discover that art museums can make you smile.
- The Upjohn Mason Grandchildren Interactive Gallery on the lower level is a place for hands-on learning and art-making, both digital and "old-school." Look for a gallery update in 2016.
- The KIA is a learning destination for students in art and art history from high schools and colleges throughout the region.
- Touch Art tours host visually impaired guests for hands-on tours of 3-D artworks.
- The Meader Fine Art Library hosts free monthly book discussions. Shown: Sally Goddard, discussion leader Von Washington, Sr., KIA Librarian Malcolm McBryde, Fran Washington, and Marion Amdursky.





**147** public events were presented

**16,500** visitors enjoyed KIA programs and services

**3,255** school-age youth enjoyed free tours and youth programs

**4,147** guests attended free Tuesday ARTbreaks

**340** artworks were submitted to the High School Area Show

**2,100** guests celebrated the opening of *Young Artists of Kalamazoo County*

**3,547** guests used the Meader Fine Art Library

**500** hours of tours and training were contributed by our docent corps

**1,500** KRESA Education for the Arts students experienced a KIA traveling exhibition at their school



# Kirk Newman Art School

Our Teen Advisory Board and monthly Teen Nights brought us new friends from area schools, while off-site classes at the Allegan Area Art Council and Richland Area Community Center introduced new audiences to our talented faculty. Photographer Jim Secreto and ceramicist Cathi Jefferson brought their talents for visiting artist workshops supported by the Jim and Lois Richmond Workshop Fund. Rosemary and John Brown provided a generous gift of \$2 million to benefit the school, which allowed us to extend our support of scholarships and programs and design a new post-baccalaureate program. Summer enrollment for camps and classes was our highest ever, and the annual holiday sale garnered proceeds of more than \$32,000 for new school equipment.

- 70** professional artists served as art school faculty
- 282** classes in ten mediums were presented
- 2,694** students took an art class
- 768** children and teens enjoyed an art class or camp
- 232** scholarships were awarded to youth & adults
- 120** area high schoolers came to the KIA for art classes through KRESA's Education for the Arts



## Clockwise from top right:

- The school studios are busy on Saturdays with classes for teens and children.
- Sofia Rangel and Enid Valle take a break from instructor Laurel Kuehl's pastel class.
- Middle schoolers work on a colorful assignment.
- Two young art campers "dressed for mess" work together making handprint art.



# Volunteers

---

## DOCENTS

Susan Baker  
Peggy Baxter  
Judi Beam  
Pam Boudreau  
James Carter  
David Curl  
Rita Dailey  
Kay Davis  
Nancy Draayer  
Marian Fisher  
Sandy Ford  
Ann Hawkes  
Gayle Hoogstraten  
David Isaacson  
Martha Jamieson  
Carol Janowicz  
Tracy Klinesteker  
Tracy Lynn  
Pam Mansager  
Denise McDonald  
Judy Meyering  
Harvey Myers  
Patrick Norris  
Scott Peterson  
Gwen Raaberg  
George Robeck  
Larisa Rozins  
David Senecal  
Paula Shelhamer  
Lyda Stillwell  
Norma Strong  
Judith Sullivan  
Diane Trupiano  
Brenda Turner  
Sara Wick  
Pat Wilcox  
Nancy Wilson  
Frank Wolf  
Jan Wolf  
JoAnn Yochim

We are blessed with a large community of volunteers, without whom we simply could not do all that we do. Our volunteers help stage a full schedule of receptions, exhibitions, sales, and special events; staff the Gallery Shop; hang exhibitions; and contribute on matters of policy, direction, and sustainability as board and committee members. Our cadre of docents devote their time to monthly training, so they are fully equipped to engage visitors of all ages with the exhibitions on view. While limited space allows only a fraction of these individuals to be listed on this page, our gratitude is boundless for all the friends of the KIA who helped us this year.

## BOARD OF DIRECTORS

James Carter President	Danielle Mason Anderson	Lori Knapp	Jan Scherzinger
Ron Kitchens First Vice President	Susan Bowers	Cindy Kole	Nancy Springgate
Priscilla Pedraza Second Vice President	Barbara Brose	Pam Mansager	Jim Stephanak
K. Perry Wolfe Treasurer	Bill DeNooyer	Harvey Myers	Ronda Stryker
Billee Lightvoet Ward Secretary	Sid Ellis	Peggy Napier	Judith Sullivan
	Michele Fabi	Mike Odar	Julie Sullivan
	Anne Fassler	Mike Ouding	Michelle Tombro Tracy
	Bjorn Green	Bill Parfet	Nancy Troff
	Daniel Guyette	Vince Pavone	Tom Turner
	Pauline Jenson	Gonzalo Rodriguez	Von Washington, Jr.

## COMMITTEE MEMBERS

### Building & Grounds

Luke Austenfeld  
Blair Bates  
Sandy Bliesener  
David Jarl  
Sondra Phillips  
**Collections**  
Linda Dunn  
Tom Lambert  
Tom Lollar  
Betty Upjohn Mason  
Sope Oyelaran  
Sondra Phillips  
Frank Sardone  
Zoe Schuitmaker

### Development

Dee Gavalis  
Brian Hudson  
Ed Sackley  
**Exhibitions**  
Carol Beech  
Jeannie Claus  
Barbara King  
Joy Light  
Nick Mahmet  
Roy Secor  
Peg Strong

### Endowment

Dean Bergy  
Robert Salisbury  
David Simpson  
**Finance**  
Brian Hudson  
Douglas Williams

### Museum Education

Diane Eberts  
Don Marek  
Anne Mehring  
Marsha Meyer  
Mary Weber  
**Kirk Newman Art School**  
Nancy Frost  
George Robeck  
Candice Roeder  
Dolores Smith

# Financial Statements

The KIA is fortunate to have dedicated volunteers serving on two Board committees. The Finance Committee scrutinizes the annual budget proposal, makes recommendations to the Board, and reviews actual operating performance throughout the year. The Endowment Committee reviews the investment performance of endowed funds, recommends the annual draw, and makes major policy recommendations to the Board. Jointly the committees receive the report of audited financial statements and report the results to the Board.

## STATEMENT OF FINANCIAL POSITION

### ASSETS

Current assets	588,821
Long-term, unconditional promises to give	1,293,866
Cash-restricted for long-term purposes	1,515,298
Investments held for endowment purposes	18,309,734
Non-art property (net of depreciation)	7,416,572
Permanent collection	12,204,389
TOTAL ASSETS	41,328,680

### LIABILITIES and NET ASSETS

Current liabilities	160,380
Net assets	41,168,300
TOTAL LIABILITIES & NET ASSETS	41,328,680

## STATEMENT OF ACTIVITIES

### SOURCES OF FUNDS

Public support and grants	3,208,858
Membership	334,251
Investment income	373,521
Net gain (loss) on investments	(1,026,857)
School tuition	526,334
Exhibitions	81,937
Gallery shop and other sales	280,701
Building rental	75,410
Miscellaneous	1,354
TOTAL SOURCES OF FUNDS	3,855,509

### USES OF FUNDS

#### *Program Services:*

School	670,322
Museum education	191,566
Exhibitions and permanent collection	424,085
Gallery shop and other sales	198,760

#### *Support services:*

Administration	721,136
Advancement and marketing	272,635
Facility operation and maintenance	907,474
Change in net assets	469,531
TOTAL USES OF FUNDS	3,385,978

# Business Partners

## MAJOR SPONSORS

Beim Foundation  
John W. and Rosemary K. Brown  
Family Foundation  
Dorothy U. Dalton Foundation  
Irving S. Gilmore Foundation  
Honigman Miller Schwartz & Cohn LLP

Patti & Bob Huiskamp  
Jerre James  
Michigan Council for Arts &  
Cultural Affairs  
MPI Research  
PNC

Santreece Foundation  
Stryker  
Stryker Johnston Foundation  
Tyler Little Family Foundation  
Harold and Grace Upjohn Foundation

## SPONSORS

Bell's Brewery  
Chemical Bank  
Cross, Wietfeldt & Splendorio  
Financial Advisors  
DeNooyer Chevrolet  
Discover Kalamazoo  
Eaton

Educational Community Credit Union  
Fabri-Kal  
Honigman  
KRESA  
Macy's  
Richard and Jane  
Manoogian Foundation

Meijer  
Miller Canfield  
Pfizer  
PlazaCorp  
Schupan & Sons  
Special-Lite  
Zoetis

## CONTRIBUTING SPONSORS

Kalamazoo Art League  
Biggby Coffee  
Bronson Healthcare Group  
Coca-Cola  
H.P. and Genevieve Connable Fund  
CTS Telecom  
The Fountains at Bronson Place

Friendship Village  
Gilmore Car Museum  
Harding's Market  
Kalamazoo Public Library  
Lawton Ridge Winery  
Metro Toyota  
Miller Johnson

Old National Bank  
Olin & Muriel Prather Charitable  
Foundation, Trustee T. Huff  
Public Media Network  
River Street Flowerland  
Trestar  
WKW Extrusion Bowers Manufacturing

## SUPPORTERS

Arts Council of Greater Kalamazoo  
Black Arts & Cultural Center  
Comerica  
Kalamazoo Book Arts Center  
Kalamazoo Chapter of the Links

Kalamazoo Knitting Guild  
Kalamazoo Log Cabin Quilters  
Metropolitan Kalamazoo Branch  
NAACP  
Peppers Stained Glass

PJ's Frame Up  
Signature Artists Cooperative  
Weavers Guild of Kalamazoo  
West Michigan Potters Guild  
WGVU-TV



Giovanni-Domenico Tiepolo, *Armor and Trophies of the Roman Army*, 1774, etching.  
Collection of the Kalamazoo Institute of Arts; Purchased with funds given by John Loring

## 2014-15 Annual Fund Donors

We extend our thanks to all who support the KIA with a gift to the annual fund. Donors listed gave \$90 or more.

Susan Abraham  
 Judy & Thomas Abraham  
 Tonia Agin  
 Martha Aills  
 Bonnie Aldrich & Glendon Toaz  
 Bruce Aldrich  
 Melody Allen & Bruce Caple  
 Cynthia & Matthew Alves  
 Cheri Arnold  
 Ann & Mark Austin  
 Penelope Axe  
 Greg Ayers  
 Shirley Bach  
 Pat & George Baltmanis  
 Margaret & David Battjes  
 Barbara Bauman  
 Aimee Bedard  
 Carol & Thomas Beech

Heather & John Beering  
 Jane Beers  
 Elaine & Dean Biddle  
 Julie Birman  
 Avril & Malcolm Blair  
 Gordon Boardman  
 Janelle and Ron Boothby  
 Sharon & Sherwood Boudeman  
 Marty & Robert Boughner  
 Norma & James Bour  
 Susan & Jon Bowers  
 Joan & Edward Bradley  
 Sheila & Jim Bridenstine  
 Patricia & Andrew Brogowicz  
 Barbara & David Brose  
 Linda & Eric Brown  
 Ruth Brown  
 Mary & Ed Buczkowski  
 Kay & Mervin Burtis  
 Emma & Carl Butenas  
 Dana & Steven Butt  
 Carol & James Carter

Joan M. Cavanaugh  
 Sharon & John T. Cerovski  
 Sarah & Alan Chase  
 Pat Chipman  
 Carol Christianson  
 Rose Christof  
 Lauretta Cillan-Chung  
 Jayne Clement  
 Janet & Tom Clemons  
 Shirley & Frank Cody  
 Carol & Donald Coggan  
 Fred Colgren  
 Nancy & Daniel Crampton  
 Dana & Theodore Cunningham  
 Ardyce & David Curl  
 Robert & Denise Davidoff  
 Kay Ellen & Lee Davis  
 Barbara & Robert Davis  
 Diana Dekker-Dame  
 Nancy Dekoning  
 Joyce DeNooyer  
 Adrienne & William DeNooyer  
 Audrey & Tom DeVault

Shari DeYoung-Pruis & Michael Pruis  
 Sharon Carlson & Thomas Dietz  
 Nancy Diment  
 Mary & William Dimond  
 Shreedevi & Umakant Doctor  
 Joann Dodson  
 Patricia & James Dolan  
 Mary & Robert Doud  
 Nancy & Fred Douglas  
 Greeta & Glen Douglass  
 Louise & Robert Dunbar  
 Jim Duncan  
 Claire & Kris Eager  
 Diane & Randy Eberts  
 Moyra Ebling  
 Susan Eckhardt  
 Mary Eckhardt  
 Nancy & Thomas Edmonds  
 Bonnie & Loyal Eldridge  
 Bruce & Judith Ellis  
 Michele & Alain Fabi  
 Robert J. Ferguson  
 Mari Fifelski  
 Sonja & Conrad Fischer  
 Marian & Ken Fisher  
 Valerie & David Flagler  
 Grace & Donald Flesche  
 Elizabeth & Lewis Fletcher  
 Beverly B. & John C. Folz  
 Sandra Ford  
 Rita & Tom Fox  
 Denise Lisiecki & Kenneth Freed  
 Beth & Jeff Freeman  
 Nancy Frost  
 Marianne & Gerhard Fuerst  
 Jennifer & Timothy Gatz  
 Marilyn & Robert Geil  
 Jean & Alfred Gemrich  
 CJ & Ann Gianakaris  
 Barbara Giesen  
 Cynthia & James Gillard  
 Lynn Weimeister & Donald Gilmer  
 F. Claus Globig  
 Norm & Judy Goodling  
 Christina & Robert Griffin

Richard Groos  
 Toni & Francis Gross  
 Sue Grossman  
 Laurel A. Grotzinger  
 Gary & Ann Gunia  
 H.P. & Genevieve Connable Fund  
 Carol Haenicke  
 Patricia & William Hanavan  
 Nancy Troff & Michael Harrell  
 Mary Hatch  
 Mara & Bob Hayes  
 Ruth & Ed Heinig  
 Sheryl & Michael Henderson  
 Ginnie and Ed Hessler  
 Darlene & LaVerne Hoag  
 Jane Nelson-Holmes & John Holmes  
 Lauri Holmes  
 Christine Holt  
 Jane & James Horn  
 Ann Houser  
 Kristin & Alan Hovestadt  
 Deborah & Reid Hudgins  
 Agnes Hughes  
 Barbara J. Hughey  
 Kathy & Terry Hutchins  
 Sandra & John Idema  
 Irving S. Gilmore Foundation  
 David Isaacson  
 Barbara & Jerry James  
 Martha & Daniel Jamieson  
 Judy & Robert Jansen  
 Beth & David Jarl  
 Polly & Hal Jenson  
 Deborah & Dennis Jewett  
 Debby & Arnie Johnston  
 Judy Jolliffe  
 Barbro & Norman Jung  
 Martha & Dr. Thomas Kakuk  
 Susan Kavanaugh  
 Nanette & Jack Keiser  
 Elizabeth & Scott Kellogg  
 Barbara King  
 David King  
 Mary & John Kittredge  
 Marian Klein  
 Lori Knapp & Michael Allen



Edward D'Arcy Loring, *Self-portrait*, c. 1918, oil on canvas. Collection of the Kalamazoo Institute of Arts; Gift of the Loring Family

Mr. Charles B. Knappen, III	Delores & Harvey Myers	Linda & Robert Salisbury	Natalie & Harvey Spivak	Adelia & Peter Van Meter
Susan Knox	Nancy Haner Memorial Fund for Nature, Arts & Literacy	Susan Fall & Frank Sardone	Nancy Springgate & Pete Kushner	Norma Van Rheenen
Karen Kott	Susan Nelson	Marilyn Sassaman	Roland Springgate	Carol & Richard VanAntwerp
Melanie Kroes-Cooper & Ric Cooper	Arthur Nemitz, Jr.	Janet & Don Scherzinger	Susan Springgate	Beverly Vande Vusse
Ruth & Dale Krueger	Bonnie & Ed Niehus	Marilyn & Larry Schlack	Myra Willis & Steven Stankewicz	Courtenay & Jon VanderMolen
Al Kushner	George Nielsen	Beverly Schmitt	Celeste & Frederick Statler	Anne & Bart vanGiessen
Bobbie & Blaine Lam	Diane & Donald Nitz	Barbara E. Scott	Kathryn Steadman	Mary & John VanSlambrouck
Donna & Tom Lambert	Louise & Mark Novitch	Elaine & William Seaman	Lynn Steil	Carrie and Bill Venema
Bonnie & Norman Langeland	Pam & Martin Obed	Elizabeth & Peter Seaver	Robert Stephan	Sharon & Kurt von Maur
Larsen Family Charitable Fund	Carla & Tom Obringer	Roy Secor	Petey & James Stephanak	Daniel Ward
Catherine Larson	Mary & Michael O'Connor	Colleen & David Semler	Anne & Gale Stephens	Sheila & Jim Ware
John & Jamie Lawlor	Sally Olexia	Miriam Shannon	M. Gayle Stephenson	Peggy Warlick
Jeanene Lewis	Florence & Joel Orosz	Paula Shelhamer	Cindy Stewart	Georgiana & Tim Washburn
Mary & Joseph Licavoli	Carolyn Ouding	Jennalie & Joel Shepherd	Peggy Strong	Von Washington, Jr.
Margo & Christopher Light	Karen Vaughn Ouding & Michael Ouding	Norma Shields	Ronda Stryker & William Johnston	Pam & Joshua Weiner
John Light	Margaret Oudsema Tanner	Dawn & Reed Shilts	Judith Sullivan	Sharon & D. Terry Williams
Joy & Tim Light	Barbara J. & Preston S. Parish	Harry Sibert	Julie Sullivan & Bret Seely	Nancy Wilson
Billee Lightvoet Ward & Philip Ward	Phyllis & Floyd Parks	Benjamin Siems & Christina Yavarow	James Swiat	Gloria Wise
Sechoing & Shu-Tzu Lin	Donna & Michael Parr	Joellen Silberman	Chris & Richard Thomas	Ruth and Ronald Wisner
Sandy & Fred Linabury	Vincent & Caroline Pavone	Carol & David Simpson	Jan & Thomas Tiderington	Janet & Franklin Wolf
Marilyn Lindbeck	Priscilla & Gabriel Pedraza	Jacqueline & Daniel Skarritt	Patricia & Gerald Timm	Anne & Perry Wolfe
Enola & James Lininger	Joyce & John Petro	Elizabeth Slocum & Kim Hill	Bridget M. & Darren Timmeney	Carolyn & Foster Woodward
Frances Liu & Terry Chiang	Ann Paulson & William Pierce	Margaret Small	Marjean & Luis Toledo	Vicki C. Wright
Patricia & Larry Lutz	Margaret Pifer	David Smallcombe	Lori Tomlinson	JoAnn & Raoul Yochim
Eric Lyons	William Prentice	Carole & James Smith	Pauline Trembley	Pamela & Arno Yurk
Linda & Dean MacVicar	Paula & Franklin Presler	Judy & Daniel Smith	Lauren Tripp	Joyce Zastrow
Kathy & Bill Main	Barbara Ann Page & Roger Prior	Dolores Smith	Mary L. Tyler	Bonita & Harold Zeigler
Maria & Seth Malin	Sally & Tim Putney	Joanne & James Smith	Ruth Ann & William Uggen	Elizabeth Burns & Roger Zinser
Pam & Tom Mansager	Gwen Raaberg	Paul Smithson	Janet & William Urfer	
Elizabeth & Craig Martin	Sue Reichert	Betty Lou Smoke		
Betty and Jerry Mason	Mr. & Mrs. Ken Reid	Sandra Smokoska		
Danielle Mason Anderson & G. Trent Pierre	Evelyn J. Rensch	Barbara & Francis Somers		
Patrick McGuire	Barbara Rensenhous			
James McIntyre	Aaron Riker			
Joyce McNally	Janet & Arthur Riley			
Elizabeth & David McShane	Donna Lou & Charles Ritter			
Connie & Steven McWethy	Louise & George Robeck			
Anne Mehring & John Mehring	Diane Robertson			
Joyce & William Melvin	Lisa & Gonzalo Rodriguez			
Kimberly Meyers	Judith & Keith Roe			
Jodi & Matthew Milks	Barbara Roty			
Joey Miller & Paul Rehkopf	Robin & Jonathan Rowe			
Rebecca Moffett-Moore	Drs. Gary & Cynthia Ruoff			
Sally & Robert Morris	Kristi & Thomas Ryan			
Cheryl Morrissey & Dan Hook	Jeanette Rybinsky			

*We regret any omissions or errors. Please let us know by emailing [museum@kiarts.org](mailto:museum@kiarts.org).*



Kirk Newman, *Forward*, 1986, etching. Collection of the Kalamazoo Institute of Arts; Gift of Betty Upjohn Mason

## Corporate Members

1st Source Bank  
 326 West Kalamazoo, LLC  
 Allegra Print & Imaging  
 Ample Pantry  
 B.A.S.I.C.  
 BDO USA, LLP  
 Bell's Brewery, Inc  
 Borgess Health  
 Bronson Healthcare Group  
 Bronson Outpatient Surgery  
 Burnham & Flower Insurance  
 Group  
 Chase  
 Chemical Bank  
 Consort Display Group  
 Consumers Credit Union  
 Consumers Energy

CSM Group  
 DeNooyer Chevrolet  
 Digital Highway, Inc  
 Dividend Mortgage, Inc  
 Eckert Wordell, Architects LLC  
 Educational Community CU  
 Engineering Design  
 Solutions PLC  
 Fabri-Kal Corporation  
 First National Bank of  
 Michigan  
 Gordon Water Systems  
 Greenleaf Trust  
 Hammond Roto-Finish  
 Harding's Markets  
 Harold Zeigler Auto Group  
 Honigman Miller Schwartz  
 & Cohn LLP

Horizon Bank  
 Inter-Source Recovery  
 Systems, Inc  
 James & Springgate, PLC  
 Jansen, Valk, Thompson  
 & Reahm PC  
 John E. Fetzer Institute Fund  
 Keyser Insurance Group  
 Keystone Community Bank  
 Lakeview Ford Lincoln  
 Landscape Forms, Inc  
 Langeland Family Funeral  
 Homes  
 Lawton Ridge Winery  
 Lewis, Reed & Allen, P.C.  
 Lindenwoods Dental  
 LP Financial Services  
 Marvin Okun Agency

McAfee Financial Services  
 Meijer, Inc.  
 Miedema, Gemmill, Kinney,  
 & Associates  
 Miller, Canfield, Paddock  
 & Stone PLC  
 MPI Research, Inc  
 MRG Hospitality Services LLC  
 Newmind Group, Inc  
 Noodles & Company  
 Old National Bank  
 Pfizer, Inc  
 Premiere Printing Corp.  
 Radisson Plaza Hotel  
 Rx Optical  
 SKP Design  
 Stephen C. Trivers LLC

Stryker Corporation  
 Superior Colour Graphics  
 Superior Imaging Services  
 The Connable Office, Inc  
 TSI Consulting Partners  
 Van Sweden Jewelers  
 VanderSalm's-Flipse  
 Flower Shop  
 Venture Advisory Group  
 VML  
 Willis Law, PLC  
 Wiser Financial Group  
 WKZO  
 Zoetis

*We regret any omissions or errors.  
 Please let us know by emailing  
 museum@kiarts.org.*



Marcia Wood, *Prospect* (maquette for Kalamazoo College sculpture), 1982, cast aluminum. Collection of the Kalamazoo Institute of Arts; Gift from the Estate of Anne Clark

Erik Desmazières, *Atelier René Tazé IV*, 1992, etching, aquatint, roulette. Collection of the Kalamazoo Institute of Arts; Gift of Paul G. Smithson

# Upper Level Personal Members

We are grateful to all of our members. Listed are those at the Patron level (\$250) and above.

## DIRECTOR'S CIRCLE

Bonita Alkema  
Judith & Robert Beam  
Priscilla & Ian Blair  
Sheri & Jonathan Boos  
Susan & Jon Bowers  
Sheila & James Bridenstine  
Rosemary & John Brown  
Susan & Bob Brown  
Kay & Mervin Burtis  
Ardyce & David Curl  
Sandra J. Edwards & Alfred B. Garcia  
Michele & Alain Fabi  
Marian & Ken Fisher  
Lori & Bjorn Green  
Richard Groos  
Ruth & Ed Heinig  
Ginnie & Ed Hessler  
Brigitte & Thomas Huff  
Patti & Bob Huiskamp  
Jerre James  
Tonia & James Kalleward  
Irene & Donald Kent  
Donna & Tom Lambert  
Margo & Christopher Light  
Joy & Tim Light  
Pam & Tom Mansager  
Betty & Jerry Mason  
Connie & Hugh Mehaffie  
Barbara & Bill Parfet  
Barbara J. & Preston S. Parish  
Joey Miller & Paul Rehkopf  
Karen Vaughn Ouding & Michael Ouding  
Martha Parfet  
Connie & Stan Rajnak  
William & Nancy Richardson  
Lois & Jim Richmond  
Louise & George Robeck  
Diane Robertson  
Janice & Edward Sackley  
Linda & Robert Salisbury  
Susan Fall & Frank Sardone  
Zoe & Harold Schuitmaker  
Elizabeth & Peter Seaver  
Carol & David Simpson  
Judy & Daniel Smith

Dolores Smith  
Ronda Stryker & William Johnston  
Nancy Springgate & Pete Kushner  
Julie Sullivan & Bret Seely  
Jane & John Todd  
Michelle Tombro Tracy & Christopher Tracy  
Mary L. Tyler  
John Wattles & Marian Klein  
Sheila & Jim Ware  
Margaret & James Woodruff

## BENEFACTOR

Cynthia & Matthew Alves  
Marion & Saul Amdursky  
Aimee Bedard  
Sue & Dennis Berkebile  
Katharine Boudeman  
Carol & James Carter  
Sarah & Alan Chase  
Susan Bourget & Peter Coles  
Dana & Theodore Cunningham  
Joyce DeNooyer  
Shreedevi & Umakant Doctor  
Linda & John Dunn  
Helen Jo & Ted Emerson  
Josiane & Robert Fabi  
Valerie & David Flagler  
Toni & Francis Gross  
Laurel A. Grotzinger  
Gerald Harty & Jon Durham  
Mara & Bob Hayes  
Diane & Jay Heckler  
Jane Nelson-Holmes & John Holmes  
Arlene & Mark Howard  
Kathy & Terry Hutchins  
Shirley Johnson  
Thomas Kasdorf  
Celine & Thomas Keizer  
Lyn & Ron Kitchens  
Lori Knapp & Michael Allen  
Thomas K. Kocher  
Sue & William Kovats  
Melanie Kroes-Cooper & Ric Cooper  
Stephanie Larsen & Bryn Larsen  
Mary Larson  
Linda & Dean MacVicar

Joy & Christopher Markin  
Elizabeth & Craig Martin  
Micki & Douglas Maxwell  
Joan & Bill McDonald  
Amy & James Melvin  
Kay & Robert O'Boyle  
Eileen Wilson-Oyelaren & Olasope Oyelaran  
Ann & Don Parfet  
Patricia Pierce  
Mary Margaret Pipkin & Robert Boisture  
Kay & John Polzin  
Joan & Paul Rahn  
Drs. Gary & Cynthia Ruoff  
Marilyn & Larry Schlack  
Paula Shelhamer  
Kathleen & Thomas Smith  
Linda & David Stafford  
Martha & Henry Upjohn  
Courtenay & Jon VanderMolen  
Sarah & Jim VanderMolen  
Judith & Sherman Van Solkema  
Carrie and Bill Venema  
Henry von Schreiner  
Mary Weber  
Sally Williams

## PATRON

Bruce Aldrich  
Joann Arvanigian  
Mary & Phil Baggerman  
Alice Balz  
Robert Bauer & John Coble  
Carol & Thomas Beech  
Jill Berglund  
Kathryn & Dean Bergy  
Jean Stevens & Jeff Bernstein  
Kathryn & Charles Bibart  
Carole Birch  
Avril & Malcolm Blair  
Gordon Boardman  
Rebecca & John Booth  
Carol Lyn Boudeman  
Sharon & Sherwood Boudeman  
Norma & James Bour  
Sheila & William Bowser  
Joan & Edward Bradley  
Patricia & Andrew Brogowicz  
Barbara & David Brose  
Do Brown

Linda & Eric Brown  
Khady & Hunter Brumblay  
Kristen & Rush Burpee  
Christine Castle  
Pat Chipman  
Jayne Clement  
Carol & Donald Coggan  
Melba & Jerry Colca  
Judith & James Coleman  
Maggie Coleman  
Judy Croasdale  
Elizabeth Eckhardt & Joseph D'Ambrosio  
Elizabeth K. Dapson  
Sharon Carlson & Thomas Dietz  
Greeta & Glen Douglass  
Deborah & David Dunstone  
Marilyn Durham  
Karol Peterson & David Dvorak  
Anne & Mike Fassler  
Barbara & Robert Felkel  
Billie & Harold Fischer  
Sandra Ford  
Nancy Frost  
Diane & David Gallivan  
Jennifer & Timothy Gatz  
Betsy and Jack Gesmundo  
F. Claus Globig  
Norm Goodling  
Sally & James Gunderson  
Linda & Charles Hall  
Nancy Troff & Michael Harrell  
Nan & Fred Harrison  
Patricia & Evan Harter  
Jane & Robert Heinrikson  
Jane & Stephen Higgins  
Darlene & LaVerne Hoag  
Tamara & Douglas Homnick  
Kristin & Alan Hovestadt  
Connie and Fred Hubbell  
Deborah & Reid Hudgins  
Marsha & Michael Irelan  
Karen H. Jacobs  
Martha & Daniel Jamieson  
Debby & Arnie Johnston  
Susan Kavanaugh  
Elizabeth & Scott Kellogg  
Richard Knapp  
Mr. Charles B. Knappen, III  
Susan Knox

Cindy & Kevin Kole  
Doris Kunkle  
Rose Mary Kupiecki  
Kimberly Greve & William Lewis  
Mary & Joseph Licavoli  
Judith Johnson & Mark Loehrke  
Jeannette & Bill Maxey  
Melissa & Eugene McKay  
Elizabeth & David McShane  
Marilyn & David Milko  
Carole & Howard Morgan  
Delores & Harvey Myers  
Peggy Napier  
Susan & Michael Nave  
Jeffrey & Barbara Nicholson  
Annette Nickel  
Priscilla & Gabriel Pedraza  
Helene & Joseph Reish  
Myral & Gerald Robbins  
Joanne Ross  
Janet & Don Scherzinger  
Michael Schlack  
Beverly Schmitt  
Jennalie & Joel Shepherd  
Dawn & Reed Shiits  
Harry Sibert  
Michaline Sinkula  
Norman Slack  
Margaret Small  
Carol Payne Smith & Robert L. Smith  
Deidre & Doug Smith  
Mary Jo Walsh & James Avery Smith  
Barbara & Francis Somers  
James Teeter & Laura Bell  
Mary Lou & Winship Todd  
Carol & John Trittschuh  
Joan & Charles Van Zoeren  
Martha & Thomas Vander Molen  
Mary & John VanSlambrouck  
Ruth and Ronald Wiser  
Janet & Franklin Wolf  
John & Margaret Wonsler  
Elizabeth Burns & Roger Zinser

*We regret any omissions or errors. Please let us know by emailing [museum@kiarts.org](mailto:museum@kiarts.org).*

